

KITCHEN8

*Alumnae Association for
Watkins and Miller Scholarship Halls &
our EMW Memorial Scholarship Recipients*



2016 REPORT



2017 ANNOUNCEMENT OF EVENTS

CONTENT

KITCHEN 8

3 WELCOME LETTER

"Miller Love" brims as 80th Anniversary approaches. **BY ALICA THOMAS**

NEW SCHOLARSHIP LOGO

We give thanks to Esther "Mike" (Hund) Richart for our past logo and embrace a new EMW Memorial Scholarship logo.

10 OUR HISTORY

An overview of our organization from 1984 to present day.

11 NEW WEBSITE

Enhancing communication and K8's Mentoring Project **BY STEPHANIE (MCDUFF) HAMBY**

KITCHEN 8 BOARD MEMBERS

Contact our Kitchen 8 Board Members with questions or a desire to connect with us.

12 PRESIDENT'S PANTRY

Kitchen 8 provides support in the spirit of Elizabeth. **BY NORMA HOAGLAND**

26 GIVING TO KITCHEN 8

Please consider how to leave your own Kitchen 8 legacy.

27 TREASURER'S REPORT

Information about Kitchen 8's finances. **BY DANA DIEG**

2016 DONOR'S LIST

Thank you to our Kitchen 8 and EMW Memorial Scholarship Fund supporters.

2017 EVENTS

13 2017 ANNUAL MEETING

The Kitchen 8 Annual Weekend and Miller Hall 80th Anniversary Celebration will be held Friday, April 21- Sunday, April 23 in Lawrence, KS.

KITCHEN 8

MISSION STATEMENT

Kitchen 8 is an alumnae organization comprised of residents, past and present, of these halls, our scholarship recipients and other supporters of Mrs. Watkins' tradition. As the official keepers of her legacy we endeavor to provide a community of support for previous, current and future residents through mentorship, charitable contributions through the Elizabeth Miller Watkins Memorial Scholarship Fund with the Greater Kansas City Community Foundation, staying informed of the condition of Watkins and Miller Scholarship Halls and striving to follow her example of compassion and selflessness.

JOIN US

Give back, with gratitude for Mrs. Watkins' gift to you. We are an all-volunteer group and there are no fees to join or belong. Whether you live near or far from KU, there are ways you can help with our work of supporting the residents of Watkins and Miller Halls and providing scholarships to financially needy young women at KU.

HALL LIFE

4 WATKINS HALL

All Hall photograph and Watkins 2016-2017 events. **BY MOLLY KAUP**

6 MILLER HALL

All Hall photograph and Miller 2016-2017 events. **BY KATIE HRENCHIR**

8 KITCHEN 8 CONNECTIONS

Events throughout the year help build relationships between current residents and Kitchen 8 members.

17 OUTLOOK TOUR

Kitchen 8 members and current residents visit Elizabeth Miller Watkins former home.

EMW MEMORIAL SCHOLARSHIP

18 SCHOLARSHIP SELECTION

Continuing Elizabeth's legacy with our EMW Memorial Scholarships. **BY SUSAN (HARSHAW) KISSINGER and VALENTINE BAUMANN**

19 ELIZABETH MILLER WATKINS LEGACY

Honoring "Lady Bountiful" and Janice Gartrell, our 1930's "Elizabeth".

LIZZIE'S LEGACIES

This year marked the founding of Lizzie's Legacies, a networking group of former and current EMW Memorial Scholarship Recipients.

20 2016-2017 SCHOLARSHIP RECIPIENTS

Announcing the new and renewal recipients of the EMW Memorial Scholarship for 2016-2017.

2016 EVENTS

14 2016 ANNUAL MEETING

Linking past and present to the future. **BY PAT (JOLLY) PUTNAM and ELIZABETH (ERVIN) BOMAN**

15 WATKINS AND MILLER HALLS BOOK SIGNING

Celebrating 90 years of our halls with a book signing in 2016.

16 WATKINS AND MILLER HALL ALUMNAE TEAS

A stroll down memory lane with fellow alumnae.

a warm WELCOME

*Miller Hall to celebrate 80th Birthday
at upcoming 2017 Kitchen 8 Meeting*

The first time I saw Miller Scholarship Hall, I was a fourth grader. My family was driving through Lawrence looking at Christmas lights, and my dad drove us up on campus to see the decorations at the chancellor's residence. Of course the chancellor's residence was impressive, but Miller Hall is what stands out in my memory. The Christmas tree stood in the front windows, and the trees and windows were all glowing with light. My breath caught, and I was in complete awe of that beautiful little house. I remember whispering "That is where I am going to live when I'm in college."

Fast forward a few years, and I did live in Miller Hall, and it became so much more to me than just a pretty house. It became home and the women became my family. The women lived, worked, cooperated

and fought together. We went through good times and bad. We survived, thrived, and suddenly it was time to leave Miller to move on to the next phase of life.

But I couldn't just leave my home and family. I couldn't benefit from living in Miller Hall and not want to share that experience and what I learned with others. Kitchen 8 has been a wonderful way to put that desire into action. Through Kitchen 8, my family has expanded to all the women who benefited from living in Miller and Watkins Halls. Kitchen 8 gives me the opportunity to share my time and talent with others, along with lessons taught to us all by Elizabeth Miller

Watkins about philanthropy, compassion, and confidence. Kitchen 8 lets me stay connected to my Miller home and family.

Thank you for joining us in the journey as we celebrate 80 years of Miller Hall. Enjoy the new format for our Kitchen 8 news and plan to spend the weekend with us in April as we celebrate together in person!

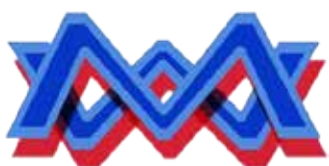
BY ALICA THOMAS

Advisory Committee Chair



AT LEFT: A portrait of Frank Miller, Mrs. Watkins' brother, which hangs in Miller Hall

New Scholarship logo links past to our future



ORIGINAL LOGO

Kitchen 8 owes a huge thanks for Esther "Mike" (Hund) Richart, W 51-53, who designed the first EMW logo used for many years for our scholarship fund. Her inspiration guided Stephanie Hamby, our website and newsletter designer, toward the updated EMW logo you see in this newsletter/magazine. Thank you, Mike, for letting us use your creation!



NEW LOGO

watkins hall



ROW 1: (Left to Right) Anne Carlson, Tulsa, OK; Shavonne Abella, Huntington Beach, CA; Sam Ritchie, Minneapolis, KS; Kate Heimonen, LaGranga, MO; Ciara Miller, Colorado Springs, CO; Dani Gerety, Wichita, KS; Amelia Bigler, Overland Park, KS

ROW 2: (Left to Right) Alissa Kastendick, Overland Park, KS; Seb Nichols, Parker, CO; Catherine Lang, Overland Park, KS; Marisa Haselhuhn, Burlington, KS; Ansley Bender, Salina, KS; Molly Kaup, Topeka, KS; Amy Zheng, Lawrence, KS; Gantsatral Ganpurev, Ulaanbaatar, Mongolia; Callie Spencer, Chanute, KS; Rena Stair, Chanute, KS; Gabrielle Doue, Omaha, NE; Mariana Vasquez, LaPaz, Bolivia; Ashley Chrisman, Blue Springs, MO

ROW 3: (Left to Right) Jamie Hartford, Olathe, KS; Jordan Hayes, Topeka, KS; Pooja Poladia, Olathe, KS; Kristy Mo, Overland Park, KS; Myles Bolnick, Coon Rapids, MN; Adrienne Cox, Topeka, KS; Abigail Bergman, Louisburg, KS; Laura Lau, Lakewood, CO; April Montoya, Garden City, KS; Kaitlin Neill, Shawnee, KS; Brittany Lee, Overland Park, KS; Melanie Leyva, Kansas City, KS; Mika Schrader, Lawrence, KS; Katie Olive, Neodesha, KS; Jerika Miller, Aurora, CO; Teresa Coons, Wichita, KS; Karen Vasquez, Liberal, KS

It's been an eventful semester for us here in Watkins, to say the least. Our dear house has changed in many ways; over the summer, the building was renovated to satisfy fire codes and to update older aspects of the house, such as our heating and cooling system. The year started off with a great deal of enthusiasm, but also with our fair share of plumbing issues. In the wake of the momentous renovations, a problem with our pipes led to frequent flooding and, ultimately, the tearing up of K1's floor (which was quickly replaced, and now looks good as new). There were many days in which we were unable to use any of our plumbing, and had to borrow Miller's toilets and showers – a big thanks to Miller for their hospitality.

But of course, this year in our cherished hall has been far from all bad. From social events to Watkins traditions to everyday life, we've had innumerable great times. We started off on a good note with our annual New Resident Ceremony in August, where we welcomed our new friends to Watkins by holding candles in a circle around the Chancellor's fountain and reading our *Is Your Mama a Llama?* children's book aloud. The New and Old



ABOVE: K1 in the midst of the pipe construction, September 2016.

Resident Dinners were also a big hit – the food provided by the alumnae who were able to come to the former was thoroughly appreciated. During Tribute Night, we loved hearing about the history of Watkins and Miller; those who were new here learned exactly why we love Lizzie so much. Our actors for the Lizzie and Jabez skit did a wonderful job, especially considering that the usual script has been lost since the last Tribute Night. It was a great evening all around.

As always, a major highlight of the semester was Heaven & Hell. Our social chairs worked incredibly hard to coordinate the event, along with many other residents who put in countless hours decorating, making food, and of course, enjoying the fruits of their labor on the night of the party. This year, it was Harry Potter-themed, complete with a big cardboard basilisk down by Hell, golden snitches hanging up in Heaven, and Hogwarts letters – one for each Watkins resident, as well as some celebrities and fictional characters – flying out of the living room fireplace. It was a truly magical night.

In November, we had our annual Thanksgiving dinner, informally known for a few years now as Watsgiving. In the absence of a Food Board Manager at the time,



ABOVE: The hall photo taken just before Heaven & Hell began, Oct. 2016.



AT LEFT: Callie Spencer and Aubrey Burgess dazzle the crowd as Jabez and Lizzie, Sept. 2016.

our Proctor (Sam Ritchie) took on the event as an extra task, and did a terrific job of coordinating it. Additionally, each kitchen put in hours of hard work to cook the many dishes we served to our friends and family who were able to join us for the meal. We had a large buffet line that included turkey, corn bread, green bean casserole, mashed potatoes, bean salad, a variety of desserts, and more. Needless to say, we had plenty of food to stuff ourselves with for days after.

Most recently, we came together to share hot chocolate, candy canes, and holiday cheer at our annual Winter Well Wishes event. We had just put up our holiday decorations a few days prior, and the living room and foyer were looking quite dazzling. After caroling through the hall and down to the living room, each of our Exec

**WATKINS CONTINUES
ON PAGE 13**

miller hall



ROW 1: (Left to Right) Annie Gardner, St. Louis, MO; Ally Dobie, Rochester, MN; Haley Flickinger, Wichita, KS; Leslie Alejandra Prieto Munoz, Liberal, KS; Hannah Walker, Clovis, NM; Allison Schwartz, Pflugerville, TX; Rosanna Chan, Overland Park, KS; Ruthie Taylor, Blacksburg, VA

ROW 2: (Left to Right) Maddy Foster, Topeka, KS; Susannah Mitchell, Kansas City MO; Erika Smith, Lenexa, KS; Kathleen Hrenchir, Paola, KS; Minh Thi Nguyen, Overland Park, KS; Gabrielle Buckner, Wichita, KS; Katie Conard, Lawrence, KS; Annellise Kolar, Olathe, KS; Megan Alford, Shawnee, KS; Kayla Wegley, Ozark, MO; Amaraïs Towle, Topeka, KS; Megan Holder, Wichita, KS

ROW 3: (Left to Right) Ahara Rundus, Munden, KS; Madelyn Stonehouse, Newton, KS; Kathryn Lipka, Lawrence, KS; Elieka Linder-Taylor, Hutchinson, KS; Mikayla Schmitz, Olathe, KS; Anh Can, Ho Chi Minh, Vietnam; Tina Wang, Topeka, KS; Haley Cooper, Wichita, KS; Michaela Behymer, Newton, KS; Steffie Villanueva, Hutchinson, KS; Laura Suarez, Topeka, KS

ROW 4: (Left to Right) Mikyla Nicol, Circleville, KS; Kerry Aldridge, Lecompton, KS; Chloe Gilligan, Lawrence, KS; Rachel Heitmann, Hebron NE; Brenna Hipsher, Olathe, KS; Lauryn Baker, Winchester, KS; Nicole Gentry, Topeka, KS; Mary Juno, Omaha, NE; Zalma Molina, Dodge City, KS; Elizabeth Godinez, Lawrence, KS; Holly Burt, Bennington, KS; Elle Perkins, Springfield, MO

When we're not slaving over homework assignments, we Millerites keep ourselves busy with community events. The night before move-in, the Executive Board went out to play laser tag as a group. The next evening, we walked to the campanile with our new women and showered them with gifts and stories of Miller.

In September we had our first Punch 'n' Pie of the year, hosting our brother hall, Stephenson. We got acquainted over desserts, and played board games for hours afterward. Later that month, Battenfeld accompanied us to Syllas and Maddy's for ice cream and conversation. We also took an evening to bond with Watkins over s'mores at Miller's fire pit.

This October was our second time hosting our new fall event, Miller Murder House. We spent days transforming Miller into an abandoned research laboratory and hospital. On the night of the event we dressed up as zombies and spooked visitors as they made their way through the house. It was a huge success!

We have also made an effort to connect ourselves with the history of our home and our past residents. In October, we took a trip to visit our newly restored scrapbook at the Spencer Research Library. Our lovely campus coordinator, Judy Niebaum, invited us all to her home for s'mores and chili at the start of the semester. She sent each girl



ABOVE: Desserts in the kitchen!



AT LEFT: Historical Scrapbooks of Miller on display at Spencer Research Library.

BELOW: Games with Stephenson Hall, Miller's brother hall.



home with an ornament for our hall Christmas tree, which she gifted us last January. In early December, Judy returned to Miller to help us decorate the hall for the holidays.

In November, we shared Thanksgiving with Battenfeld. We cooked seven turkeys, and the boys handled the sides. Our last event of the year was our week-long Secret Sister gift exchange. During the week we hid small gifts for our giftee, and on Saturday we had a Secret Sis reveal party with paper snowflakes and cookies.

BY KATIE HRENCHIR

Miller Hall President 2016-17



ABOVE: This is why it's called "Punch 'n' Pies!!"

building CONNECTIONS

Hall Residents and Kitchen 8 members bond throughout yearly activities

NEW WOMEN DINNER

We started off the year with our traditional New Women dinner. This year, the dinner was held in Watkins, organized by Camille (Icenogle) Olcese, the Watkins Hall Campus Co-Coordinator. This gave all of the alumni a chance to see the remodel, and was a success despite the many obstacles we encountered while setting up. First of all, the remodel was done very well, however, they did neglect some plumbing issue that resulted in a flood in K-1. Unfortunately, we had planned a new arrangement where instead of setting up many tables in the TV room (which lost some space due to the remodel), we were having new women and alumni eat in the kitchens. While this helped facilitate



ABOVE: A group of new residents and Kitchen 8 members gather during the New Women Dinner at Watkins Halls.

more personal conversations between the alumni and the residents, the closure of one of the kitchens, and the fact that the new tables in all of the kitchens are now smaller and seat fewer people, certainly caused a mad scramble at the beginning!

Despite this, or perhaps because of it, we all had a fantastic meal (the alumni are such wonderful cooks) and good conversation before heading upstairs for the traditional giving of the New Woman Booklet, which has a history of Elizabeth and her halls. Then we were treated to W&M's Traditions Night. The returning residents put on a fun skit, portraying Lizzie and J.B. for us all, we recited the creed, sang "My Sweetheart of Lilac Lane," then everyone went their separate ways. A great start to another year, and a special thanks to all who made it happen.

BY STEVI BALLARD

Watkins Hall Campus Co-Coordinator

LIZZIE'S B-DAY PARTY

Kitchen 8 celebrated Elizabeth Watkins's 155th birthday (that's ses-qui-centennial plus 5 for anyone who's

counting) at the Watkins Museum of History on Jan. 29, 2016. More than one-half of the residents of Watkins and Miller came to celebrate our Lady Bountiful who was born January 21, 1861.

Local Kitchen 8 members, who organize Lizzie's birthday party every year, adorned guests with strands of pearls in the spirit of Mrs. Watkins' signature accessory, served cake and punch, and led the revelers in a rousing rendition of "Happy Birthday" to Mrs. Watkins, our benefactress.

At that point, Lizzie's birthday party departed from usual custom. Instead of the guests bringing presents, Kitchen 8, in the spirit of Mrs. Watkins, gave presents to Watkins and Miller. Watkins women delighted at the gifts, including board games, an electric griddle, an exercise DVD, and 14 pot holders that Bev (Runkle) Benso (Watkins 1954-58), former longtime Watkins Campus Coordinator, hand-knitted with love. Miller women opened presents of kitchen thermometers and a generous supply of plastic refrigerator containers.

The last and most special gift to Miller Hall was a Christmas tree. The Miller women christened it "Jerry's Tree," in honor of Jerry Niebaum, Judy's beloved husband and wonderful Kitchen 8 member, who had passed away just a few weeks earlier.

"I gave them our tall, lovely silk tree in January at EMW Birthday Party" said Judy Niebaum, Miller Hall Campus Coordinator. "Now the Miller women have invited me to come to help them decorate their



ABOVE: Miller residents around the table for Chili and S'Mores. **AT RIGHT:** Baking S'Mores with Judy.



tree on Saturday, December 3rd! That will be a warm, sweet Holiday beginning for me this year!"

Thanks go to the K-8 members who made the EMW birthday celebration possible: Susan Anderson, Stevi Ballard, Valentine Baumann (Watkins 2003-05), Bev (Runkle) Benso (Watkins 1954-58), Simone Briand (Watkins 1982-86), Laura (Draxler) Sixta (Watkins 2006-09), Norma Hoagland, Judy Niebaum, Abby Olcese (Watkins 2008-11), Camille Olcese, Alica Thomas (Miller 1990-94) and Elena Wahbeh (Watkins 1970-72). Extra special thanks also goes to Elena for the lilac colored tablecloths and donating them for future celebrations.

BY CAMILLE (ICENOGLE) OLCESE

Watkins Hall Campus Co-Coordinator

ALUMNAE TEAS

At the 2016 Alumnae Teas, Kitchen 8 proudly presented our new book *Watkins and Miller Halls* to each graduating senior who has lived in Miller and Watkins all four years.

MILLER HALL'S CHILI AND S'MORE SUPPER

On Sunday, September 25, 2016 the Miller women gathered at the home of Judy Niebaum (K8 Miller Hall Campus Coordinator) for our traditional Chili and S'Mores Supper!!

We worked as a team to put together the S'Mores, which we baked in the oven to their delicious, melted-marshmallows state of "ready-to-eatness"! Yummy!

BY JUDY NIEBAUM

Miller Hall Campus Coordinator



ABOVE: Miller Women at Judy Niebaum's home.

AT LEFT: The 4-year Miller women pose with their new copies of the book given to them by Kitchen 8. For more information about the upcoming Alumnae Teas, see page 13 and the 2016 Alumnae Teas, see page 16

Kitchen 8 HISTORY

*Linking
Watkins &
Miller Hall
residents,
alumnae,
and EMW
Scholarship
recipients*

Urban legend has it that in 1984, a young woman named Ann Fidler was the Watkins Hall Director. House Mothers had been replaced in 1968 by young graduate students who oversaw the residents of Watkins and Miller Scholarship Halls. Ann, like many other dwellers of Watkins, was dating a Battenfeld man, Joe Shields, and accompanied him home one weekend to meet his parents. The mother waiting to meet this young lady was Verda Lee (Miller) Shields, herself a Watkins Woman. As the two ladies met and talked, Ann relayed her concerns about the condition of Watkins, with peeling paint, rotting windows and frequent flooding of bathrooms and basement. Verda quickly contacted her Watkins friends from the 1930's: Corrine (Martin) Ervin, Harriett (Stephens) Wilson and Frances (Strait) Brown. When this "posse" of Watkins Women arrived to inspect Watkins, an article in the UDK from April 1984 details their displeasure with the condition of the halls and the repairs needed. Department of Student Housing Director J.J. Wilson is quoted as saying they are "not in apple pie shape," but have a "good twenty years" left in them. You can imagine their dismay!

From the original four "Found-

ing Mothers of Kitchen 8," word spread among alumnae of all ages. Debra Stark, M 81-85 and Mary Boyce, W 83-87 were key in planning reunions to get the alumnae into the halls to see the conditions. In 1986, at the Watkins 60th Anniversary Reunion, Watkins Hall Alumnae and Friends (WHA&F) was established by Ola (Stover) Faucher, W 67-71, Jackie Bogner, W 68-71, Jane Beal, W 67-71, and Gayle (Barry) Matchett, W 55-57. Goals were set. The Watkins and Miller Trust was discovered and we began to understand the numbers, thanks to Ola, and the legal issues, thanks to Karen Krueger, W 56-60. We began to learn who Elizabeth Miller Watkins was. WHA&F set up a scholarship at KU Endowment but as their rules changed, the WHA&F Cleo Mathes Fund was moved in 1997 to Greater Kansas City Community Foundation, under the new name "Kitchen 8."

This name, Kitchen 8, not only has meaning as a metaphoric kitchen we all belong to but also brings to mind images of those early years of our organization at the kitchen table of Gayle Matchett. Gayle inspires, keeps issues alive, reminds us of our past and to keep our eyes open. Joyce Klemp Browder, W 54-58, carried the leadership role for years, again recruiting

and inspiring alumnae to join and work. These two women have kept Kitchen 8 organized, growing and moving ever forward. So many alumnae sent money, wrote letters, talked to KU officials and bravely withstood criticism of their loyalty to Elizabeth Miller Watkins and her vision. Our roster now contains over 800 names.

What can we possibly say to the courageous residents who filed an injunction against Bank of America to allow them to have access to W&M Trust records? We cannot imagine the pressure put on them; threats of increased rent rates (which did happen), criticism of their alliance with their alumnae, the weight of legal responsibility, the stress of financial responsibility, the difficult distraction from their studies. We owe them a huge debt of thanks for establishing the legal rights of the residents, the keystone of future demands for information. These were the women who began the Committee for Preservation of Watkins and Miller Halls.

We can say to them the Hall Treasurers now receive quarterly statements from Bank of America for the Watkins/Miller Trust. K8 members help them read these reports, watch, and ask questions. Hall Treasurers are invited to KU's Housing Trust Committee meeting. Although we are still working on having adequate input into the rent rates, we record, chart and keep our members aware and alert. We plan further episodes from these eras of struggle and growth in future editions of the K8 Newsletter. Please send your stories to the editors!

New website enhances communication and Mentoring Project

Kitchen 8 strives to link our rich heritage with an exciting present and a bright future. As our association grows and technology changes, we continue to expand offerings to our membership. To do this, we have created a new website with both public information and expanded member resources.

PUBLIC INFORMATION:

Visitors to the public side of the website have access information about our association, our board, Kitchen 8's contact information, our benefactress, or the annual Elizabeth Miller Watkins Memorial Scholarship. For the most recent alumnae and current resident information, how to get involved in Kitchen 8, current hall happenings, and to register for upcoming events please see the "News" tab.

MEMBER RESOURCES:

Members may now connect via private professional and social discussion forums to better facilitate our Mentoring Program. You may easily search for other Watkins and Miller Alumnae and send them messages, while maintaining everyone's privacy. The member directory works similarly to Facebook's Messenger program, allowing the e-mailing of individuals without divulging the member's email information. This private "Member Resources" section will also contain our Kitchen 8 newsletters, Watkins and Miller Scholarship Hall scrapbooks, and treasurer's report. To access these resources, please join Kitchen 8 and login.

PERSONALIZE YOUR PROFILE:

Each Kitchen 8 member has a private Member Profile page that allows

the member to freely update their own email, contact information, hall history, and Kitchen 8 committee involvement. You may adjust privacy settings as you would like on your Personal Page. At Kitchen 8 we wish to maintain your privacy while connecting former hall residents with current residents and EMW Memorial Scholarship Recipients. Kitchen 8 members are the only ones who have access to the searchable directory. In the upper right hand corner you may select "Logout", "Change Password", or your name. To make changes to your membership information, including privacy settings, please select your name. That will allow you to view your current profile and select "Edit profile".

BY STEPHANIE HAMBY

Kitchen 8 Website Coordinator



PRESIDENT

Norma Decker Hoagland, W 69-71
president@kitchen8.org

VICE-PRESIDENT

Elizabeth Ervin Boman, W 70-74
vicepresident@kitchen8.org

SECRETARY

Paula Hopkins Wrigley, M 03-07
membership@kitchen8.org

TREASURER

Dana Diec, W 09-11
treasurer@kitchen8.org

HISTORIAN

Laura Draxler Sixta, W 05-09
historian@kitchen8.org

MILLER CAMPUS COORDINATOR

Judy Johnson Niebaum, M 58-61
millercoordinator@kitchen8.org

WATKINS CAMPUS COORDINATORS

Camille Icenogle Olcese, W 71-74
Stevi Ballard, W 06-10
watkinscoordinator@kitchen8.org

SCHOLARSHIP SELECTION CHAIRS

Susan Harshaw Kissinger, W 70-74
Valentine Baumann, W 03-05
scholarship@kitchen8.org

ADVISORY COMMITTEE CHAIR

Alica Thomas, M 90-94
advisory@kitchen8.org

WEBSITE / NEWSLETTER CHAIR

Sarah Wohlrahe Shortall, W 72-76
communications@kitchen8.org

MENTORING CHAIRS

Cathie Fuller Miller, W 70-73
Sarah Greenup, W 08-12
mentoring@kitchen8.org

WEBSITE COORDINATOR

Stephanie (McDuff) Hamby, D 95-97
website@kitchen8.org

CHAIRS EMERITUS

Gayle Barry Matchett, W 55-57
Bev Runkle Benso, W 54-58

K8 MAGAZINE EDITORIAL BOARD

Norma Decker Hoagland
Susan Kissinger
Sarah Wohlrahe Shortall
Michelle Loewenstein
Molly Kaup
Katie Hrenchir

K8 MAGAZINE DESIGNERS

Stephanie Hamby Celia McDuff

PRESIDENT'S PANTRY:

What a wonderful 90th Watkins Celebration our 2016 Kitchen 8 Weekend was! Heart-warming stories of alumnae given at the Annual Meeting; tour of The Outlook (Elizabeth's home); our Champagne and Sweets Book Signing Reception at the Union Pacific Depot; Hall Teas on Sunday; it was perfect in every way! If you missed 2016, make plans now to join us in 2017, as we celebrate Miller's 80th Anniversary!

I am so grateful for the outpouring of appreciation for K8's work to firmly place Watkins and Miller Scholarship Halls in KU's permanent history. Our book, *Watkins and Miller Halls*, establishes our place and spreads Elizabeth's legacy to a much larger audience. Book sales were awesome over our weekend and have continued. There have been two more articles about Watkins and Miller in the KU Alumni magazine over the last year. We have had an impact.



**NORMA
(DECKER)
HOAGLAND**
President

Our best moments as support to our residents came about this year, and I must share them with you:

At a special meeting Watkins residents requested with Student Housing, we were asked to attend for support. One of our residents who served as Proctor of Watkins had been repeatedly harassed by KU Housing staff since an incident involving the hospitalization of a Watkins resident. The Proctor was

forced to quit her position and was given 24 hours to move out of Watkins during finals week. The Watkins women objected to the way this situation was handled. They were well prepared for the meeting, had written objectives and an agenda for the meeting, but were met with little in the way of resolution. That employee of Housing was still there the following fall.

Susan (Harshaw) Kissinger spent a great deal of personal time this spring with the hall treasurers, helping them read the Watkins and Miller Trust quarterly statements that they now receive from Bank of America. Huge thanks must go to Susan, and the hall treasurers, Dona Diec, now graduated, Kaitlin Neill and Kayla Wegley, W & M Treasurers, respectively. Stressing continuity, K8 is encouraging each treasurer to work with her sister hall and hand off the records to the next treasurer with a history of where the numbers are going. These young women monitor not only the rent rates but the investment income from the W&M Trust and expenditures made from the Trust.

Each fall a W&M Revenue and Expenditure report is produced by KU's Dept. Of Student Housing (DSH). On each of these, the End of Year balance never appears on the following year as a Beginning Balance, year after year. A trust specialist hired by K8 suggested this was the first place to ask questions. Kaitlin Neill, Watkins Treasurer, posed this question very professionally, and KU admitted they sweep these funds into a general account at the



Susan (Harshaw) Kissinger and Dona Diec, Watkins Treasurer 2014-16, examines Watkins-Miller Trust documents.

end of each year. Rent rates should be lowered, since there is always a balance left over, was Kaitlin's next point. Over the last eight years, this End of Year balance has been between \$7,000 and \$50,000. Diana Robertson, Director of DSH said these end of year balances are used to "inform our rates for the following year" yet there is no correlation between a large End of Year balance and any lowering of rates. If rent rates were lowered, KU would have less to sweep into its general fund, so there is no incentive for them to lower rates.

When the hall treasurers received their annual invitation to the Housing Trust Committee meeting (successor to Elizabeth's Rent Setting Committee) where the rent rates are approved for the next year, they again asked for K8 to attend for support. Robertson mentioned the residents had asked about the End of Year balances and the committee concurred those funds are swept into a general account at the end of each year. No consideration was given to lowering the rent rates, but we must keep pointing out that this is not Elizabeth's intent for the University to profit financially from the Halls.

K8 is doing great work. Join us. Give back a little of what you gained

PANTRY CONTINUED

from Elizabeth's vision of helping us affordably get our education. As Nelson Mandela said "Education is the most powerful weapon which you can use to change the world." K8 is doing remarkable things with little money but much motivation.

NORMA (DECKER) HOAGLAND

President

WATKINS CONTINUED

members gave imaginary "verbal gifts" to two or three other residents and performed short skits in small groups. A common theme in the skits was, not surprisingly, the flooding catastrophe of the beginning of the semester. We laughed, we bonded, and we consumed an unhealthy amount of sugar.

We love to participate in social events and Watkins traditions, but even in the absence of planned events, we have a good time with one another. It's not at all uncommon to come across a group of residents gathered in the hallway to talk, often for a very long time. The second floor is notorious for being a little loud and frequently full of people who have come out of their rooms to visit with others. The friendly community that we enjoy here is easily one of the top reasons so many of us love this place so much. As another semester in Watkins comes to a close, we can only hope that the one to follow is every bit as enjoyable and memorable as the current one has been – though of course, we hope the spring sees fewer floods than the fall has. Happy holidays from all of us here at Watkins, and a huge thanks to our alumnae for all you continue to do for us.

BY MOLLY KAUP

Watkins President

KITCHEN 8 WEEKEND:

Miller Hall's 80th Birthday Celebration Weekend

APRIL 21-APRIL 23, 2017

Lawrence, Kansas

FRIDAY, APRIL 21, 2017

3-5 PM **K-8 Board Meeting** - Help us plan future events and celebrations! Open to Watkins/Miller alumnae and residents at **Watkins Museum, 1047 Massachusetts St.**

6:30-? **"The Way We Were" Welcome Party and Chicken and Beef Taco Buffet at Hampton Inn Lobby, 2300 W. 6th St.** Wear your favorite Watkins/Miller outfit and bring your scrapbooks and memorabilia. **RSVP BY APRIL 6. PAY ONLINE OR AT THE DOOR.**
COST: \$12 each, includes buffet & soft drinks (BYOB)

SATURDAY, APRIL 22, 2017

9 AM **Meet and Greet at Maceli's, 1031 New Hampshire**

9:30 AM **Business Meeting and Elections**

10 AM **Program: "Miller Love!" A Celebration of the 80th Anniversary of Miller Hall!** Come and enjoy hearing memories of life in Miller Hall from the 1940's to the present. And you'll learn why Miller Hall's motto is "Miller Love!"

11 AM **Celebratory Brunch with EMWM Scholarship Recipients and Watkins/Miller Residents** - During brunch, test your knowledge of the history of the philanthropy of KU's "Fairy Godmother." **Please consider a donation to cover brunch costs for a Watkins/Miller resident and/or EMW Scholarship recipient, who are guests of Kitchen 8. RSVP BY APRIL 6. PAY ONLINE OR AT THE DOOR.**
COST: \$20 each, includes brunch

12 PM **Elizabeth Miller Watkins Memorial Scholarship Award Presentation at Maceli's, 1031 New Hampshire**

2:30 PM **A Legacy in Stone Tour, Lawrence Memorial Hospital, 325 Maine St.**

5-6:30 PM **Champagne & Sweets to Celebrate Miller's 80th Anniversary at Watkins Museum of History, 1047 Massachusetts. RSVP BY April 6.**

SUNDAY, APRIL 23, 2017

2-4 PM **Watkins Alumnae Tea at Watkins Scholarship Hall, 1506 Lilac Lane**

2-4 PM **Miller Alumnae Tea and Special 80th Anniversary Celebration at Miller Scholarship Hall, 1518 Lilac Lane**

4 PM **Honoring "Lady Bountiful" Traditional visit to lay flowers on the grave of Elizabeth Miller Watkins at Oak Hill Cemetery, 1605 Oak Hill Ave.**

RSVP FOR THE WELCOME PARTY, BRUNCH AND RECEPTION BY APRIL 6 VIA ONE OF THE FOLLOWING:

ONLINE: www.kitchen8.org

EMAIL: normahoagland@kitchen8.org

PHONE: 913-775-3685



A time of celebration...

ABOVE: Annual Meeting and Scholarship Awards 2016 at Maceli's. **BELOW:** 1970's Gals!

2016 Annual Meeting links past and present residents

The fun began Friday night at a "Come As You Were" Taco Bar at TownPlace Suites at the rooftop open-air restaurant. Everyone enjoyed the beautiful view, the mild weather, making new friends, and renewing old bonds. Scrapbook pictures highlighting college life in the scholarship halls on Lilac Lane and even old yellowed recipe cards were shared with lots of smiles, laughs, and memories. Many Miller and Watkins women spent the night at the hotel, reprising the old days of sharing a freezing cold or a roasting hot sleeping porch, only with better climate control. Although no one wore a poodle skirt, some embroidered work shirts did reappear after decades in drawers and closets.



ABOVE: Current hall residents attending K8 Annual Meeting.

Following our short business meeting, on Saturday morning we were entertained and informed about life in the halls in the 1950s and 60s. We listened and sometimes laughed as Bev Benso and Creta Nichols shared life in Watkins Hall in the 1950s. Polly Ruhter Epting brought back memories of the Vietnam War when she told of both the fun and serious side of life in Miller Hall in the mid-60s. Following these presentations, we were delighted by a sneak peek at summer renovation plans for the halls by Norma Decker Hoagland, Steffie Villanueva of Miller and Kaitlin Neill of Watkins. All three were part of the committee that oversaw the renovations. We were excited for the improvements in accessibility for the disabled but saddened by the visual impact of closing the stairways for fire safety.

As we enjoyed a delicious brunch at Maceli's in downtown Lawrence, we were able to engage both our appetites and our brains while we played Scholarship Hall Trivia! During the meal, to facilitate meeting and making new friends, we quizzed



our tablemates to answer questions about the unique history of Watkins and Miller Halls. We found out that Elizabeth Miller Watkins's desire was to help "girls who must travel uphill" and that in those first years, she paid the housemothers herself. Did you know the rent at the halls was originally limited to \$3 per month? We learned that when Eleanor Roosevelt visited Watkins in 1938, she had a "run" in her stockings! And some of us were saddened to learn that "phone duty" ended in 2014!

Our EMW Memorial Scholarship Awards were announced and are featured beginning on page 18. We all felt great pride in continuing Elizabeth's legacy of giving assistance to young women to attend KU.

The weekend was attended by nearly 100 women from the 1940s to 2016! All were glad to be part of the sisterhood of women helped by EMWs wonderful idea to establish our Scholarship Hall system!

BY PAT (JOLLY) PUTNAM and ELIZABETH (ERVIN) BOMAN

Annual Meeting Co-Chair and K8 Vice President

GOOD reception

*2016 Champagne and Sweets Event
launches Watkins & Miller Halls book*

An overflowing crowd celebrated the debut and book signing of Watkins and Miller Halls. This book is the fourth in a series on KU architectural landmarks. The series was begun by Carol Shankel and Barbara Watkins, editors of this book. The researcher and compiler of the book, Norma (Decker) Hoagland is the current K8 president. Carol and former KU Chancellor Del Shankel were there to celebrate. Also attending were former president of Historic Mount Oread Friends Ken Armitage and his wife, Katie. Ken was instrumental in getting Watkins and Miller included in the East Campus Historic District. Watkins Museum director, Steve Nowak, attended enthusiastically, along with a large crowd of “Elizabeth’s Daughters” from all decades, of all ages!

K8 members Elena Wahbeh and

Sarah (Wohlrabe) Shortall, the reception sponsors, were there, hands-on, to set up the lovely room with candles, champagne, sweets, and historic photos mounted on a wall of memorabilia. The crowd spilled over into the lovely gardens on this beautiful April evening.

In her remarks, Norma thanked Kitchen 8 members and Historic Mount Oread Friends for their support in publishing our book, along with her family. She then asked how many in attendance had been touched by Elizabeth’s generosity. Nearly every hand in the Union Depot went up and a hush came over the crowd.

We know from reading her papers that Elizabeth loved sweets, so the theme of Champagne and Sweets seemed appropriately celebratory for the unveiling of our book on the Watkins 90th Anniversary!



ABOVE: A happy crowd at the book signing event!



Watkins & Miller Halls, a book newly published by the Historic Mount Oread Friends, details the story of Elizabeth Miller Watkins and her development of the two scholarship halls at the University of Kansas. The book was compiled by Kitchen 8 President Norma (Decker) Hoagland and launched during our 2016 Kitchen 8 Annual Meeting in April.



To purchase your copy of the *Watkins & Miller Halls* book, order from the University Press website at <http://kansaspress.ku.edu/978-0-7006-2275-7.html>.



ABOVE: Paula (Hopkins) Wrigley and Sam Bunnyfield show the Alumnae Teas are a family event! (No shortage of laps for little Cara Wrigley or Owen Bunnyfield!)



ABOVE: 90th Anniversary cake for Watkins Hall.



ABOVE: Using the 1940's silver set at Watkins Hall!

a stroll down MEMORY LANE

Watkins and Miller Halls Alumnae Teas connect scholarship residents of through the generations

It is such a sign of love and respect to see how “our girls” prepare for the Hall Alumnae Teas! Both Miller and Watkins prepare lots of treats and entertainment, including music and poetry/prose readings. The halls are shining clean and ready for us to walk through and reminisce. How often we hear the remark “I feel 18 years old again when I walk through that door!” Watkins Hall celebrated her 90th Anniversary, with K8 providing the

cake. Of special note was the 1940s silver tea service, out of the trophy case, all polished up and ready to use.

This is a great occasion for all ages! We visit, remember our time in the hall, look at the scrapbooks and get to know each other better, as well as our bright young residents of today! If you haven't attended a Hall Alumnae Tea, come join our residents in April of 2017.



ABOVE: Miller Hall's Alumnae Tea 2016.



TOUR SHOWCASES REFURBISHED BEAUTY OF EMW'S FORMER HOME

A sunny April afternoon afforded a stroll up to the front door of The Outlook, the home Elizabeth and Jabez Watkins built after their marriage in 1909. Completed in 1911, this lovely building is now called “home” by all KU Chancellors. Shade Little was at the door to welcome us in, along with Dana Aydukovich, manager of the home.

A presentation was given about the home and then we were free to explore the main floor or public area. Although no furnishings from Elizabeth or Jabez are in the home any longer, the dining room has always had a lovely oil painting

of Elizabeth on the wall.

Newly refurbished for Chancellor Gray-Little, the rooms are lovely and very usable for large gatherings.

You may notice the rug in the photo of the group to the right, with the Kansas state emblem. This rug matches the one in Cedar Crest, the Kansas Governor’s mansion outside Topeka.

It is always a poignant time for us, “Elizabeth’s Daughters,” to return to her home and look out the windows from which she watched students walk through her gate and uphill to class.

AT LEFT: *The former residence of Elizabeth Miller Watkins is now the KU Chancellor's home.*

BELOW: *Roselyn (Skonberg) George and Marilyn (Whiting) Thomas pose by EMW's portrait.*



ABOVE: *More of the group of alumnae and residents.*



ABOVE: *Kitchen 8 members and Hall residents gather on The Outlook's staircase during the tour.*

AT LEFT: *Elaine (Young) McCullough, Cathie (Trussell) Best, and Patricia (Jolly) Putnam pause near the piano.*

selection COMMITTEE

Members bring richness of unique life experience to the scholarship process

The Scholarship Selection Committee is a volunteer committee comprised of women who have lived in Watkins or Miller Scholarship Halls and/or who have received an EMWMF scholarship. For the past

several years, the committee has ranged from 10 to 12 members. Most members have served for at least three years

and half have served for five or more years. Members attended KU during the 1970's (5), late 80's/early 90's (3), and 2,000's (4) and 2010's (1). Two of our members are scholarship recipients. Four members live in northeast Kansas while other members live in Missouri, Texas, Connecticut, Minnesota, Nebraska and Colorado. Because of the distance, we have not all met each other face to face. During the April 2016 Kitchen8 annual meeting and scholarship award luncheon, we recruited two more members who will join us for the 2017 evaluation process, one from Utah and one from Kansas. The rewards of serving on this committee include working with a wonderful group of women who share the joy of getting to know many talented and highly motivated young women through their scholarship application essays



and answers.

Throughout March and early April, committee members review 30 to 50 applications via an online system and generate a personal ranking of

the applicants. Rankings include an assessment of academic performance, activities, and financial need, but most agree, that an applicant's articulation, in a 500 word essay, of her understanding of Mrs. Watkins' values and priorities

and how Mrs. Watkins' values compare/contrast to her own life values and priorities is the most important and interesting part of the application. Committee member personal rankings are then consolidated to create a group ranking. After a group discussion via email of the top ranked applicants, we determine a final listing of recommended

scholarship recipients for approval by the Advisory Committee.

Each committee member brings the richness of her unique life experience to the selection process which assures that we identify a diverse group of outstanding scholarship recipients.

BY SUSAN (HARSHAW) KISSINGER AND VALENTINE BAUMANN

EMW Memorial Scholarship Selection Committee Co-Chairs



AT RIGHT: *The 2016-2017 Elizabeth Miller Watkins Memorial Scholarship Recipients with the Selection Committee members.*

HER LEGACY...*Our Inspiration*

To honor the generous legacy of Mrs. Watkins, past residents of Watkins and Miller Halls, through Kitchen 8, established the Elizabeth Miller Watkins Memorial Scholarship Fund in 1998. The Fund that began with a few hundred dollars awarded \$66,000 in scholarships in 2016-2017. We would like to thank all who have donated. It is amazing how one woman's vision can impact so many women's lives.



ELIZABETH MILLER WATKINS was born in 1861 in New Paris, Ohio, daughter of a Civil War doctor. When Elizabeth was 11, her family moved to Lawrence where she enrolled in the KU Prep School. Sadly, after only 2 years, she was forced to drop out and help support her family. Elizabeth would later turn her own unfulfilled dream of an education into a legacy for generations of women to come.

At 15 she began work at the J B Watkins Land and Mortgage Co. She and JB were married in 1909. They had no children of their own

and after JB's death in 1921, she turned her attention to the plans of giving she and JB had made. With a \$75,000 donation in 1925, Watkins Hall opened in 1926, the first scholarship hall in America. Building on that success, Miller Hall opened in 1937. Mrs. Watkins also created and gave a trust to provide for the maintenance and upkeep of both halls, which is still active today.

JANICE GARTRELL lived in Watkins Scholarship Hall from 1939-1942. She was known as "Giggles" and "Garter" to her friends at Watkins. She enjoyed her room-mates, taking pictures and she excelled academically. She had an outstanding career in the oil business and loved to travel. After her passing in March of 2009, the EMWMSF received the funds of the Janice Gartrell Charitable Remainder Trust, enabling Kitchen 8 to award generous scholarships to deserving young KU women. Janice Gartrell was truly a woman who embodied Mrs. Watkins' legacy.



Lizzie's
LEGACIES

NEW GROUP CONNECTS PAST AND PRESENT EMW MEMORIAL SCHOLARSHIP RECIPIENTS

In 2016 Kitchen 8 established Lizzie's Legacies, a group especially for the connection of current and former Elizabeth Miller Watkins Memorial Scholarship Recipients. Its purpose is to provide a "Kitchen" of support to KU women who have received the scholarship. If you have benefited from the EMW Memorial Scholarship and would like to stay connected with other alumnae, please join us in conversation on the Lizzie's Legacies' Social Forum on the Member Connection Portal or email **GAYLE (BARRY) MATCHETT, K8 EMWMS Recipients "Housemother"**, at **GAYLEMATCHETT@KITCHEN8.ORG**.



*Elizabeth Miller Watkins
Memorial Scholarship*

**2016-2017 AWARD
RECIPIENTS**

DONA DIEC

Wakeeney, Kansas

In her application, Dona noted, "Without an education, I would not be able to succeed in my career. Without endurance, I would not be able to challenge the adversities that come my way. Without Watkins Hall, I would not have the opportunity to shape the character and leadership skills that I have today." Dona is a senior in the 6th year of the PharmD program. She lived in Watkins Scholarship Hall and served as the Treasurer. She volunteers at a research lab, has participated in Relay for Life since 2008, and is a member of the University Honors Program. Dona will complete her pharmacy rotations next year and shared, "After graduation, I plan to practice in a pharmacy in western Kansas or underserved areas with a shortage of healthcare professionals. Practicing in a rural area can increase the availability of health care providers, as the general public has easy access to seek help from pharmacists."



ALLYSA DEJARNETTE

Lee's Summit, Missouri

Allyssa is a junior with a double major in Clarinet and Elementary Education. She is pursuing a career as an elementary school teacher and hopes to teach kindergarten or first grade. Allyssa is a very active student musician being a member of KU Marching Band, Basketball Band, Wind Ensemble, and Symphonic Band. She volunteers with Relay for Life of KU as part of the planning committee and leads her music fraternity as Service Committee chair. In her application she reflected on Mrs. Watkins' creed sharing, "These words are truly inspiring ways to look at and live life. [Mrs. Watkins] had a love for others and was able to lift up and support them in any way that she could. Through Mrs. Watkins' life and values, I am inspired to live my life in a way that reflects her heart and values."



DANIELLE GERETY

Wichita, Kansas

Danielle is a sophomore majoring in Microbiology with a minor in Music. She plans to attend medical school after receiving her undergraduate degree and pursue a career as a Clinical Pathologist. Danielle is a member of the KU Symphony as a cellist and a trainee in a Pathogen Research Lab. She volunteers in her local hospital, hopes to be accepted into the K-INBRE research program, and was the Environmental Chair at Watkins. Danielle expressed her gratitude for Mrs. Watkins' gift of the halls, "The moment I set foot on the campus and walked into Watkins Hall, I somehow felt like I was at home again. I was able to make friends quickly this way, and I'm so grateful for the close-knit community that this scholarship hall has brought me in my life so far."



JULIE HIEGER*Andale, Kansas*

Julie is a senior majoring in Applied Behavior Science with a minor in Speech-Language-Hearing and will complete her degree in May of 2017. She hopes to pursue a Masters of Occupational Therapy. Julie has chosen a specialty area of Early Autism Intervention and currently works with a teenager with severe developmental disabilities. She previously lived in Watkins Hall, holds two part-time jobs to fund her education, and participates in many activities throughout the campus and community. In her application she noted, "The legacy of Elizabeth Miller Watkins has impacted my life by giving me a fuller understanding of what it means to 'look up and love and laugh and lift' and how to continue her legacy through the guidelines and opportunities with which she has provided myself and countless others."

**ADELAIDA MENDOZA***Holcomb, Kansas*

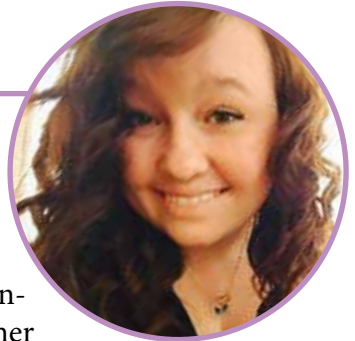
Adelaida is a sophomore working towards a double major in English and Political Science. She aspires to earn her Juris Doctorate. She relates to Mrs. Watkins's struggles to achieve an education as she comes from an immigrant family and her own mother obtained her educational goals later in life. Adelaida reflected, "Ever since we begin to grow into young adults, we are told to lead a life of example and excellence. No one was better model of this than Mrs. Elizabeth Miller Watkins. A timeless illustration of what a resilient woman can become, she still continues to have an impact on current students today. What intrigued me most [about Mrs. Watkins] was that, though she was not able to receive a high school diploma because of her family's circumstances, she truly understood the weight of importance that higher education carries."

**ERYKAH JACKSON***Kansas City, Kansas*

Erykah is a freshman majoring in Biomedical Engineering. She is the first in her family to attend college and plans to pursue a career in her local community in a healthcare setting. In high school Erykah was involved with a program called Project Lead The Way, which helped to develop her interest in the field of engineering. She participates in many activities serving as a Student Ambassador, a member of the Robotics Club, and a peer mentor with Link Crew. Erykah explained her motivation in her application "There are very few women in STEM fields and I plan to be an inspiration, become a role model, and grow the number of women in engineering. I want to change the way girls look at careers in engineering and feel comfortable coming into this field."

**MADISON REED***Edgerton, Kansas*

Madison is a junior working towards a Bachelor of Science in Nursing. She hopes to join the Nurse Candidate Program and serve her country as a nurse in the U.S. Navy upon completion of her degree. Madison is currently a Certified Nurse Assistant and has volunteered in various healthcare settings. She is the first in her family to attend college, commutes to school to offset costs and works 30 hours a week to help fund her education. She shared her plans for the future, "Higher education, and more specifically KU have always been my dream, and with continued hard work, I hope to walk under the chiming campanile that Mrs. Watkins helped provide and know that KU was the first step, of many, to making a difference in people's lives."



JULIA SANTOS

Holcomb, Kansas

Julia is a junior studying Biology, with a focus on the pre-medicine track. She has a job as an Undergraduate Researcher at KU, and plans to work as a Certified Nurse Assistant next year to help pay for college. Julia had the honor of being the valedictorian of her senior class and was recently elected secretary of her medical fraternity. She shared that her leadership roles “have taught me to understand leadership begins with believing in yourself and not stopping until you have accomplished your goals”. In her application, Julia expressed, “Mrs. Watkins and I share the passion to open a brighter future with more education opportunities for women. After all the hard work Mrs. Watkins put toward improving opportunities for young, driven women like her, it would be a great honor to receive Mrs. Watkins’ scholarship.”



ALEXIS TIBBITS

Topeka, Kansas

Alexis is a freshman studying Human Biology and Spanish, on the pre-med track. She was vice president for the National Honor Society, and was named a Kansas Honors Scholar. Alexis is active in an organization that encourages involvement of special needs students and was a mentor to freshman students. She is interested in researching viruses during college, and expressed a desire to go on mission trips to provide medical care to those in impoverished areas. Alexis shared in her application, “Being not only the first woman but the first person at all in my family to be going to college has shown me that I can achieve my ambitious goals through hard work and perseverance, qualities I believe Mrs. Watkins possessed. My education will help make me successful and, through my success, enable me to give back to those in need.”



KATY WINKEL

Glen Elder, Kansas

In August 2016, Katy began her 4th year in the 6-year PharmD degree program. Katy showcased her motivation towards her goal of attending college, stating, “The first thing that came to mind upon reading Elizabeth Miller Watkins’ biography was my mother. Mom aspired to earn a college degree. Instead, circumstances required her to take a job shortly after graduating from high school. Like EMW, my mom believes deeply in education and frequently reiterates that I need to earn a college degree.” Katy is the treasurer for a pre-pharmacy club and works part-time as a Pharmacy Technician to help fund her education. She started working at a retail pharmacy near her hometown at the age of fourteen, the owner and pharmacist encouraged her pursuit of this career path and inspired her dream to attend the KU School of Pharmacy.



**RENEWAL
RECIPIENTS**

ERIN BONIFIELD

Overland Park, Kansas
2ND-YEAR RECIPIENT

Erin is a senior majoring in Music Education. Erin’s application showcased her passion for education and music, and her desire to share this passion with her future students. She explained her future plans, “I want to teach band and spread a joy and love for music among kids. I eventually want to start a youth brass band program and inspire young brass players.” She is a very active musician, through the University of Kansas and the local community. Erin is also a resident of Douthart Scholarship Hall and expressed that as a resident she feels Mrs. Watkins’ “generosity and love for people”. She may be pursuing a study abroad program next spring to learn about the brass band tradition in England.



CHEYENNE BROWN*Kansas City, Kansas*
2ND-YEAR RECIPIENT

Cheyenne is a sophomore majoring in Evolution, Ecology, and Organismal Biology. She hopes to be a veterinarian, which is a change to her career plans. She is an active student, holds a part-time job to help pay for her education, and volunteers at a local retirement community. Cheyenne shared “I am very excited to pursue this new path in my career and ultimately, education, and cannot wait to see my dreams become a reality. I know that becoming a veterinarian will not be easy, academically or financially, and as such I am working hard to make sure I am covered in both areas [by] working different jobs, seeking out help, applying for scholarships. I truly believe that with all of the support I have received from family, friends, and of course, Kitchen 8, I will be able to make my dreams a reality.”

KATE MCCURDY*Lawrence, Kansas*
2ND-YEAR RECIPIENT

In August 2016, Kate began her junior year majoring in Civil Engineering. Kate showcased her determination towards her goal of attending college, stating that she has worked hard, “to begin my journey in education and attend classes ‘up the hill.’ I love KU and am thrilled to have this opportunity.” In addition to her engineering coursework she is taking classes in music and Spanish, with the expectation that knowledge of the Spanish language will provide opportunities in her future career. She maintains many activities outside of her studies, as she a member of KU Concert Choir, Society of Women Engineers, KU Swim Club, and Engineering Student Council. As a resident of Margaret Amini scholarship hall, Kate noted that she sees Mrs. Watkins as a supporter of young women and a role model. She expressed great appreciation for the support provided through the scholarship.

ELIZABETH GOODROW*Topeka, Kansas*
3RD-YEAR RECIPIENT

Elizabeth is a junior working towards a Bachelor of Science in Chemistry and plans to attend medical school upon completion of her degree. In her sophomore year at KU, Elizabeth involved herself in many organizations, including her dorm council, Honors Student Council, and serving as programming director for a pre-health fraternity. She received an award for being a “stand out freshman Chemistry major” and is a Chemscholar, a denotation for students who excel in Chemistry. She explained, “My volunteer work at [a local hospital] is the most valuable experience, because I’m learning things that can help me for the future career I hope to have.” Elizabeth shared in her application “[Mrs. Watkins] aided many people throughout her life; I am hoping that by being a doctor, I can assist people like she did.”

JORDAN MERADITH*Omaha, Nebraska*
3RD-YEAR RECIPIENT

Jordan is a senior continuing her work towards a Bachelor of Science in Elementary Education. She shared the news that she was accepted into the School of Education, an exciting step in fulfillment of her degree plans. Jordan maintains a part-time job and was a board member at Watkins Scholarship Hall last year. In her renewal application she explained her enjoyment of her job and the influence on her educational pursuits, “Since my second semester at KU I have worked for [a children’s education center]. I started as a teacher’s aid and this past summer I was an assistant teacher. I really love this job and it has taught me a lot. It is the reason I decided to change my major. This past school year I was able to take over as the Program Director for their after-school program. I’ve really enjoyed this opportunity and am reassured everyday that I was correct in changing my major to education.”

BAILEY RENDZIA*DeSoto, Kansas*
3RD-YEAR RECIPIENT

Bailey is a junior continuing her studies in the School of Engineering. She is following the path for a degree in Civil Engineering and shared her career goals, "I hope to be able to join a Civil Engineering consulting firm to work as a water resources or transportation engineer. I will be able to work on projects that benefit my community and come up with innovative solutions to problems people face throughout the world." Bailey shared her honor to be named to the University of Kansas Dean's List and has completed Honors courses throughout her academic career. An active student, Bailey also shared that she began an internship with a local county public works department and is Team Captain of KU's Concrete Canoe Team.

RAJVI SHAH*Overland Park, Kansas*
2ND-YEAR RECIPIENT

Rajvi is a senior finishing her Bachelor of Science in Neurobiology with a minor in Psychology. She plans to attend medical school after receiving her undergraduate degree. In her renewal application Rajvi said, "Thanks to the Elizabeth Miller Watkins Scholarship, I feel more confident in my ability to finish my schooling in time to apply for medical school this summer and have been able to pursue experiences that will help me achieve those goals." Her experiences shadowing physicians at KU Med Center motivated her to pursue a career in pediatric neurology. Rajvi serves on the Student Health Advisory Board for Watkins Health Center and volunteers with two international organizations focused on providing access to education and medical care in impoverished communities and developing nations.

JOCELYN SAJNANI*Overland Park, Kansas*
4TH-YEAR RECIPIENT

Jocelyn is a senior studying for a Bachelor of Science in Biology with a focus on genetics. She has completed requirements for a minor in Psychology and continues coursework for the pre-med program. Jocelyn took the MCAT and applied to medical schools in the summer of 2016. She is a member of the University Honors Program, volunteers as an interpreter at a local free medical clinic, and works two part-time jobs to pay for most of her education expenses. Jocelyn expressed her appreciation in her application, "I continue volunteering and shadowing which have me leaning toward practicing family medicine in the future. Whatever specialty I end up pursuing, I know that I want to practice in a medically underserved community. Nothing would make me happier than to help my community how Mrs. Watkins helped hers, how she has helped me."

DESTINY SHELTON*Stafford, Kansas*
2ND-YEAR RECIPIENT

Destiny is a junior majoring in Psychology. She is the first in her family to attend college and plans to continue on in the graduate program and pursue a career as a clinical psychologist. Destiny is also seeking a Minor in Business and has begun taking courses in fulfillment of this additional education plan. In high school Destiny was a teacher's aid for an after school program and the president of an organization focused on graduation retention, these activities helped influence her chosen career path and desire to work in the school system. In her renewal application, Destiny explained her motivation "I hope to become a psychologist so I can help those struggling with mental illnesses and help them live a better and more comfortable life."

BRITTANY SMITH*Longview, Washington*
2ND-YEAR RECIPIENT

Brittany is a senior finishing her Bachelor of Science in Nursing. She was accepted into the School of Nursing last year and is currently completing the final two years of the professional program on the KU Medical Center campus. Brittany shared in her application that she hopes to serve as a nurse in a rural community, wanting to make a difference in a constantly under-staffed area. Expressing her future plans and gratefulness, Brittany noted, “Eventually, after gaining some experience, I hope to return to school for an advanced practice nursing degree to deepen my understanding and skills. Thanks to this scholarship, I have much more easily paid for my schooling without placing a financial strain on my family. I am very grateful for this award which has helped me in so many ways.”

CECILIA VILLANUEVA*Hutchinson, Kansas*
2ND-YEAR RECIPIENT

Cecilia is a junior majoring in Microbiology. She lives in Miller Scholarship Hall, works part-time to help fund her education, and is the first in her family to attend college. This summer she had the opportunity to work as an undergraduate assistant in a research lab, and shared that gaining direct experience in her desired profession helped her feel confident in her degree choice. Cecilia noted more about her future plans and her appreciation in the renewal application, “I am interested in working in a research lab that specializes in vaccines. I want to help find a way to fight diseases. Thanks to the generosity of you all, I was able to live a year of less financial stress.” She told that she was able to save money and make a plan for paying her tuition for the next year.

KATIE STRNAD*Munden, Kansas*
3RD-YEAR RECIPIENT

Katie is in her 5th year working towards a PharmD degree. Her future plans are to practice in Kansas in an independent pharmacy setting, where she will be able to “serve her community and bring quality health-care to her patients”. Katie maintains a part-time job to help offset the costs of tuition, has taken on more responsibilities with student organizations, and is very excited to continue pursuing her goal of becoming a licensed pharmacist. Expressing her gratitude, Katie shared, “I have had an incredible experience at the University of Kansas so far including living in Miller Scholarship Hall for four years, making life-long friends, and pursuing my dream of a pharmacy profession. These things would not be possible without the financial support of those who have generously invested in my education. I’m looking forward to another year of opportunity and growth!”

KAYLA WEGLEY*Ozark, Missouri*
2ND-YEAR RECIPIENT

Kayla is a junior working towards a Bachelor of Fine Arts in Dance. She lives in Miller Scholarship Hall and has a part-time job in order to offset the cost of her education. Kayla told of her future plans of auditioning for a dance company position to enrich her experience and later continuing on in graduate studies. She hopes to one day open a non-profit educational center for the arts to share her passion for education and artistic expression. Kayla shared “I [recently produced] a curated show titled *Alterity*. It is a completely student choreographed and run show. I received two grants to produce the show, and will be earning an extra certification with my degree for my work.”

GIVING TO KITCHEN 8... *leaving your own legacy*

Elizabeth taught us the far-reaching effects of intelligent giving and we strive to follow that example. Reading our magazine demonstrates the importance of continuing her legacy.

We offer you two options to financially support our all volunteer organization. **BOTH OF THESE OPTIONS ARE TAX-DEDUCTIBLE.**



KITCHEN 8 SUGAR BOWL: Give to Kitchen 8, the umbrella group founded in 1997 to support the women who live in Miller and Watkins. This tax-deductible money goes to projects such as New Woman Booklets, Career Day, Elizabeth's Birthday Party and gifts to the halls. Every dollar you donate to Kitchen 8 is used for the women and to help our members stay informed and in touch. This can be done via our secure website at www.kitchen8.org or by mail to:

Kitchen 8 Treasurer
Dana Diec
 1204 E. 117th Street, Apt. 5
 Kansas City, MO 64131

You can celebrate a special person, anniversary, birthday, or retirement with a donation to Kitchen 8; give in honor of a former roommate; or ultimately in memory of a dear one you have lost.



ELIZABETH WATKINS MEMORIAL SCHOLARSHIP FUND: If you prefer to give to our Elizabeth Miller Watkins Memorial Scholarship Fund, send your donations to Greater Kansas City Community Foundation. Go to the donations tab on our website at www.kitchen8.org or mail to:

GKCCF
 1055 Broadway
 Kansas City, Missouri 64105

Please note your donation is for the "Elizabeth Watkins Memorial Scholarship Fund".

Many of us have planned ahead and named this fund in our wills. Let your family know Kitchen 8 and these Watkins and Miller women are your priority. Both the K8 fund and our Scholarship Fund are under the direct control of our alumnae group. Your donation does not go to KU Endowment. Given Elizabeth's intent and the history of the W&M Trust under the control of KU Endowment, we think that is important for you to know.

DONATION FORM

Clip out here and mail

ENCLOSED IS MY CHECK TO SUPPORT:

- Kitchen 8 Sugar Bowl (*expenses for student activities*)
- Elizabeth Watkins Memorial Scholarship Fund

NAME: _____

ADDRESS: _____

YEARS / HALL (If Applicable): _____

IN HONOR OF/ MEMORY OF: _____

MAIL TO: *Kitchen 8 Treasurer*
Dana Diec
 1204 East 117th Street, Apt. 5
 Kansas City, MO 64131

THANK YOU! REMEMBER YOUR DONATION TO EITHER FUND IS TAX-DEDUCTIBLE!

TREASURER'S REPORT:

As of August 2016, I began to serve as Kitchen 8's treasurer. I lived in Watkins from 2009-2011 and was part of the executive team as social chair and later treasurer. The friendships and memories of my time in Watkins are still held dearly

in my heart.

I look forward to contributing to the success of Kitchen 8 and meeting all the wonderful Watkins and Miller women throughout the year at Kitchen 8 events.

I would like to report that K8's bank account, commonly referred to as the "Sugar Bowl," had a beginning balance of 2016 was \$3,473.40, and as of December 2016, the ending balance is \$3,088.18.

BY DANA DIEC

K8 Treasurer

EMW MEMORIAL SCHOLARSHIP FUND & KITCHEN 8 SUGAR BOWL

2016 Donors

FROM THE 1930'S

Janice Gartrell Charitable Remainder Trust

FROM THE 1940'S

Donna (Holm) Fisher (Watkins 1946-49)*
Roselyn (Skonberg) George (Watkins 1945-48)

FROM THE 1950'S

Bev (Runkle) and Eldon Benso (Watkins 1954-58)*
Ann (Fahrback) Branden (Watkins 1956-59)*
Gayle (Barry) Matchett (Watkins 1955-57)*
Pat (Powers) McClure (Watkins 1952-55)*
Creta (Carter) and W. Eugene Nichols (Watkins 1955-57)

FROM THE 1960'S

Norma (Decker) and Joe Hoagland (Watkins 1969-71)*,
*Memorial to Ruth Warren Wilkin (Watkins 1938-40) &
in honor of Gayle (Barry) Matchett (Watkins 1955-57)*

FROM THE 1970'S

Catherine (Trussell) Best (Watkins 1972)
Elizabeth (Ervin) Boman (Watkins 1971-75)*
Susan (Harshaw) Kissinger (Watkins 1970-74)*
Susan Masih (Watkins 1972-75)
Cathie (Fuller) and Ron Miller (Watkins 1970-73)*
Pat (Jolly) Putnam (Watkins 1971-74)
Sarah (Wohlrabe) and John Shortall (Watkins 1972-76)*
Elena Wahbeh (Watkins 1970-72)*

FROM THE 1980'S

Annette Smith (Miller 1987-91)

FROM THE 1990'S

Alica Thomas (Miller 1990-94)

FROM THE 2000'S

Tobey Billinger (Watkins 2005-09)
Becky Doyle (Watkins 2000-04)
Dory Cochran (Watkins 2005-10)
Sarah Greenup (Watkins 2008-12)*
Stephanie (Wilkinson) Hargett (Watkins 2000-04)*
Paula (Hopkins) Wrigley (Miller 2003-08)
Ali (Bannwarth) Zayas (Watkins 2002-06)*

WATKINS ALUMNAE

Linda (Knackstedt) Johnson
Patricia (Brown) Pedersen

FRIENDS OF KITCHEN 8

Betty Alderson
Doris Brown*, *Memorial to Carolyn Crocker
(Watkins 1944-46)*
Camille A. Lauer

* Indicates donor also contributed in 2015

*Thank you
for your efforts to
support the mission
of Kitchen 8 & the EMW
Memorial Scholarship
as together we promote
the legacy of
Elizabeth Miller
Watkins.*

KITCHEN 8

*Alumnae Association for Watkins
and Miller Scholarship Halls & our
EMW Memorial Scholarship Recipients*

**2525 STOWE DRIVE
Lawrence, Kansas 66049**

WWW.KITCHEN8.ORG

KITCHEN 8 PRESENTS:

2017 Schedule of Events

FRIDAY, APRIL 21, 2017

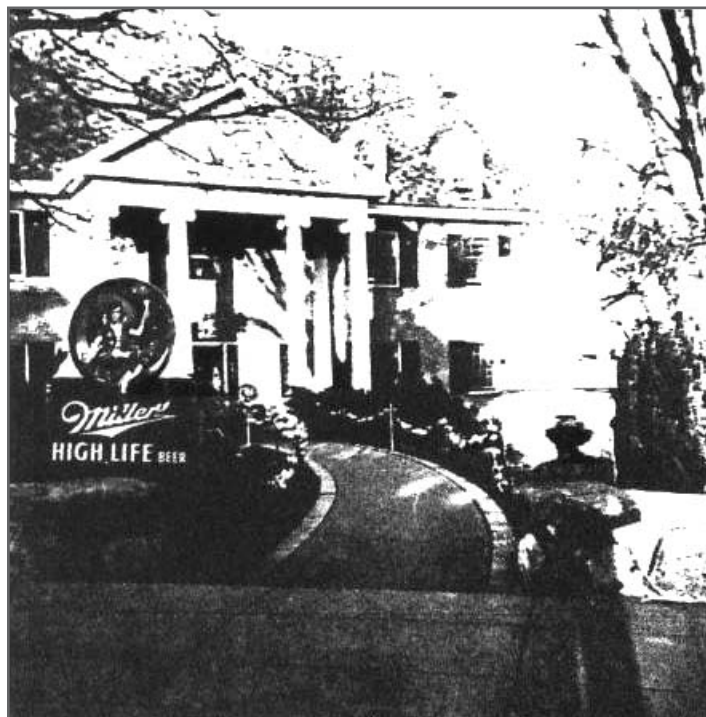
- 3:00 – 5:00 PM** *K-8 Board Meeting*
Watkins Museum
- 6:30 – ?** *“Come as You Were” Welcome*
Party - Hampton Inn Lobby

SATURDAY, APRIL 22, 2017

- 9:00 AM – 1:30 PM** *K8 Annual Meeting, Brunch &*
Scholarship Awards
Maceli’s, 1031 New Hampshire
- 2:30 PM** *Legacy in Stone, Tour of*
Lawrence Memorial Hospital,
Elizabeth’s Gift to the City
- 5:00 – 6:30 PM** *Champagne & Sweets to Celebrate*
Miller’s 80th Anniversary
Watkins Museum

SUNDAY, APRIL 23, 2017

- 2:00 – 4:00 PM** *Alumnae Teas*
Watkins Hall and Miller Hall
- 4:15 PM** *Traditional Laying of Flowers*
at Elizabeth’s Grave
Oak Hill Cemetery



ABOVE: Miller Hall, prepared for the “Joe’s Place” party in the 1950’s.

1967 GRADUATE? IT'S YOUR 50TH!

What better time to plan a re-visit to KU than this year? Contact your prior roommates and set up a reunion! We have the hotel and plans all set for you, just get started! We can help you find email contacts for those you want to see but don't have information for. Just email us at the K8 website at WEBSITE@KITCHEN8.ORG! Get started – don't let another year pass by without seeing those gals again!