

KITCHEN8

*Alumnae Association for Watkins and Miller Scholarship
Halls & our EMW Memorial Scholarship Recipients*



*Come Home
to Lilac Lane*



*2019
Annual
Weekend
Events*

CONTENT

HALL LIFE

4 WATKINS HALL

All Hall photograph and Watkins 2018-2019 events. **BY CAITLYN SKINNER, POOJA POLADIA, AND ZOE WELAND**

6 MILLER HALL

All Hall photograph and Miller 2018-2019 events. **BY ZALMA MOLINA**

2019 EVENTS

8 2019 ANNUAL MEETING

The Kitchen 8 Annual Weekend will be held Saturday, April 27-Sunday, April 28 in Lawrence, KS.

2019 ELECTION NOTICE

During the Annual Meeting, K8 members will elect a new Board.

KITCHEN 8

3 WELCOME LETTER

After 10 years, an alumna reflects on the impact of her hall on her life thus far. **BY ABBY OLCESE**

9 OUR HISTORY

Summary of "The Lawsuit" gives first hand perspective about efforts to preserve EMW's financial legacy.

11 RENT INCREASES

Detailing the steady increases of rent for living in Watkins and Miller Scholarship Hall.

12 PRESIDENT'S PANTRY

A heartfelt "thank you" to Kitchen 8 Members by the outgoing President. **BY NORMA (DECKER) HOAGLAND**

13 "MY SWEETHEART OF LILAC LANE"

A history of the beloved song often sung by Kitchen 8 members. **BY SARAH (TAGGART) GARTEN**

14 10 YEAR REUNION

"Within 10 years, some things change, some will never change!" **BY MICHELLE LOEWENSTEIN**

15 KITCHEN 8 CONNECTIONS

Events throughout the year help build relationships between current residents and Kitchen 8 members.

KITCHEN 8

MISSION STATEMENT

Kitchen 8 is an alumnae organization comprised of residents, past and present, of these halls, our scholarship recipients and other supporters of Mrs. Watkins' tradition. As the official keepers of her legacy we endeavor to provide a community of support for previous, current and future residents through mentorship, charitable contributions through the Elizabeth Miller Watkins Memorial Scholarship Fund with the Greater Kansas City Community Foundation, staying informed of the condition of Watkins and Miller Scholarship Halls and striving to follow her example of compassion and selflessness.

JOIN US

Give back, with gratitude for Mrs. Watkins' gift to you. We are an all-volunteer group and there are no fees to join or belong. Whether you live near or far from KU, there are ways you can help with our work of supporting the residents of Watkins and Miller Halls and providing scholarships to financially needy young women at KU.

2018 EVENTS

20 2018 ANNUAL WEEKEND

Linking past and present to the future. **BY PAT (JOLLY) PUTNAM**

22 DEBRUCE CENTER & NAISMITH'S "RULES OF BASKETBALL" TOUR

Kitchen 8 Members enjoy a private tour of sports center.

EMW MEMORIAL SCHOLARSHIP

23 SCHOLARSHIP SELECTION

Continuing Elizabeth's legacy with our EMW Memorial Scholarships. **BY VALENTINE BAUMANN O'KANE**

24 PROCESS CHANGES

Adjustments to the EMW Memorial Scholarship selection process.

25 ELIZABETH'S LEGACY

Honoring "Lady Bountiful" and Janice Gartrell, our 1930's "Elizabeth."

26 2017-2018 EMW SCHOLARSHIP RECIPIENTS

Announcing the new and renewal recipients of the EMW Memorial Scholarship for 2018-2019.

16 WATKINS AND MILLER HALL ALUMNAE TEAS

A stroll down memory lane with fellow alumnae.

18 KITCHEN 8 BOARD MEMBERS

Contact our Kitchen 8 Board Members with questions or a desire to connect with us.

19 LIZZIE'S LEGACIES

A networking group of former and current EMW Memorial Scholarship Recipients.

31 SISTERS WE HAVE LOST

"We don't always know when a sister passes, but we always care." **BY MICHELLE LOEWENSTEIN**

34 GIVING TO KITCHEN 8

Please consider how to leave your own Kitchen 8 legacy.

TREASURER'S REPORT

Information about Kitchen 8's finances. **BY ELENA WAHBEH**

35 2017 DONOR'S LIST

Thank you to our Kitchen 8 and EMW Memorial Scholarship Fund supporters.

Elizabeth's dream - Abby's dream

THE LEGACY CONTINUES

A Second Generation Watkins Woman

Kids' dreams for themselves usually change pretty frequently. One year they want to be an astronaut, the next a paleontologist, the next a librarian. But from a pretty young age, I knew exactly what I wanted to do with my life. I had four goals: go to KU. Study journalism. Live at Watkins. Become a world-famous author.

I'm still working on that last one, but the first three I stuck with. I'm a second-generation Watkins woman. I grew up hearing stories from my mom, Camille (a proud fellow K-8 member), about Heaven and Hell parties, birthday dunkings in the chancellor's fountain, and living with a big group of women who sounded so outspoken and fun.

I moved into Watkins in the spring of 2008, and while my years of preparation did help me get ready for what I experienced, there was still a lot to learn on my own. Watkins was where I experimented

with recipes and discovered the power of crock-pots. I learned how to get along with people whose experiences and tastes were different than mine. I watched weird movies and hunted for cake in the kitchens with my roommates (one certainty about Watkins life: somewhere, there was always cake). Even in my childhood dreams I couldn't have imagined how important my time in the hall would be, or how it would continue to impact my life afterward.

As a member of K-8, I'm also proud to be part of the continuing legacy of Elizabeth Miller Watkins, acting as a friend and ally to the current residents, as well as helping out-



ABOVE: Abby Olcese at the 2018 Alumnae Tea at Watkins Hall.

standing students achieve their own goals. Now that I live on my own, I'm responsible for making my own cake, which is, admittedly, kind of a letdown. But the relationships I experienced as a student have only continued to grow. It's a joy to be able to watch future generations of Watkins residents as they go through that same journey.

BY ABBY OLCESE

Watkins Hall 2008-2012

"Education is the most powerful weapon which you can use to change the world"

NELSON MANDELA

watkins hall



FRONT ROW: (Right to Left) Charlotte Muttai, Shawnee, KS; Nikki Myers, Lawrence, KS; Milka Schrader, Lawrence, KS; Andrea Guidry, Houston, TX; Greta Miller, Leawood, KS; Emma Hixson, Topeka, KS; Madison Manche McMillian, St. Joe, KS

MIDDLE ROW: (Right to Left) Cherilyn Mendoza, Woodridge, IL; Max Woodbury, Topeka, KS; Isabelle Sears, Oklahoma City, OK; Brittany Lee, Overland Park, KS; Emily Tribolet, Kansas City, MO; Kiara Holtkamp, Branson, MO; Caitlynn Skinner, Clearwater, KS; Sarah Soriano, Shawnee, KS; Kalena Nichol, Lawrence, KS; Callie Spencer, Chanute, KS

BACK ROW: (Right to Left) Savannah Austin, La Vernia, TX; Sydney Combs, Lawrence, KS; Victorina Joy Santos, Philippines; Lily Warner, Lee's Summit, MO; Malena Schoeni, Thonton, CO; Marissa Olin, Shawnee, KS; Sura Jaradat, Wichita, KS; Zoe Weland, Omaha, NE; Teresa Swantek, Shawnee, OK; Aubrey Kerbs, Seattle, WA; Mattie Wiseman, Charlottesville, VA; Hanah Glimpse, Kansas City, KS; Anne Kim, Junction City, KS; Malyiah Finch, Lawrence, KS

PHOTO BY DEBRA BATES LAMBORN OF FIRST CITY PHOTO IN LEAVENWORTH, KANSAS

Watkins Scholarship Hall is arguably one of the most unique places to live during college at KU. The community that has come together in fall of '18 is so diverse and welcoming. It's absolutely lovely to see residents from different backgrounds come together and have a home together. We go to events together. We provide emotional support for each other by trying to lift each other up. And we take a lot of pictures of each other. Even though we aren't cut from the same cloth, it's no surprise that we call each other family.

It can be a difficult transition coming to college and leaving home for the first time. Watkins Scholarship Hall has quickly become a home that our incoming freshmen have been able to flourish in. Before they arrive, we always pair new residents with a returning resident. We call this "Big and Little Llamas".



ABOVE: *The new residents at Watkins Hall.*

This is in the hopes that they have a contact point in the community before and during the first weeks of school. But after a month or so, it's like they have lived here their whole life.

Diversity is something we focus on as a hall and love to demonstrate. At Watkins, we can fit in by standing out. But every once in a while,

it is fun to look like your friends. Whether, we are wearing denim and sneakers or a little black dress and heels we are the lovely sweet-hearts of Lilac Lane.

BY CAITLYNN SKINNER

Watkins Historian

WITH THANKS TO:

*Watkins Alumnae Co-Chairs: Pooja Poladia
& Zoe Weland*



ABOVE LEFT: *Denim and sneakers day at Watkins Hall.* **ABOVE RIGHT:** *Wild Watkins Women at an 80's Event sponsored by another hall.*



Miller hall



FRONT ROW: (Right to Left) Elizabeth Godinez, Lawrence, KS; Julia Gronewold, Wichita KS; Allison Brown, Lawrence, KS; Ashlee Brown, Lawrence, KS; Allison Dobie, Rochester, MN; Georgi Singleton, Liberty, MO; Jasmine Adrian, Arlington, VA; Zalma Molina, Topeka, KS; Elizabeth Newell, St. Louis, MO

MIDDLE ROW: (Right to Left) Natalie Hershberger, Wichita, KS; Kinsey McCormick, Gardner, KS; Dana Sullivan, Las Vegas, NV; Jane Yoo, Manhattan, KS; Gloria Ganitt, Manhattan, KS; Alexandria Ring, Manhattan, KS; Natalie Fanella, DeKalb, IL; Ruthie Taylor, Blacksburg, VA; Andrea Sanchez, Liberal, KS; Jordan LeBeau, Stillwater, OK; Ruby Morris, Brooklyn, NY; Christine Damsgaard, Denver, CO; Emily Clark, Aledo, TX

BACK ROW: (Right to Left) Abigail Bergman, Louisburg, KS; Eleanor Matheis, Lawrence, KS; Nicole Whitten, Eudora, KS; Alyssa Salas, Wichita, KS; Riley Taylor, Manhattan, KS; Kathy Martinez Reynaga, Topeka, KS; Merall Janjua, Overland Park, KS; Kaitlyn Ring, Manhattan, KS; Amarais Towle, Topeka, KS; Madalyn McCabe, Caldwell, KS; Mary Juno, Omaha, NE; Thuy VanVo, Wichita, KS; Regan Smith, Chanute, KS; Erica Culler, Gardner, KS; Tina Wang, Topeka, KS; Hunter Ousley, Wichita, KS; Pi'ikea Neill, Omaha, NE

PHOTO BY DEBRA BATES LAMBORN OF FIRST CITY PHOTO IN LEAVENWORTH, KANSAS

It has been a fun time at Miller Hall this year!!

With about 30 new women coming in at the beginning of the semester, the house was definitely going to get a lively atmosphere. One of the first activities here at KU involved getting ready for Homecoming. As a hall, Miller participated in Chalk and Rock to make our community known through designs on Jayhawk Blvd. We also had representation on the Schol Hall Land float for the homecoming parade.

October is definitely the month devoted to Miller's Haunted House. Every girl takes on a task to contribute to this social event. The girls who worked as "scarers" got their makeup and costumes ready. This event was a lot of fun and more than 200 people walked through the haunted house!

Miller has also had a presence in other scholarship hall events. 20's Night at Krehbeil involved dancing, games, and plenty of food which was just enough to get a great group to go have a good time.

Winter Formal, a very popular event, gave a reason to get all dressed up right before the end of the semester which turned out to be a success considering the large amount of Millerites who attended!

BY ZALMA MOLINA

Miller Hall Alumnae Chair



AT TOP: Miller's Homecoming Float.

SECOND FROM TOP: Miller Women at Krehbeil Hall's Roaring 20's Party.

ABOVE: Winter Formal at Miller Hall – Look at us!

AT LEFT: Miller Hall design on Jayhawk Boulevard!

2019 K8 PROGRAM: 'Women Who Dared'

We invite you to join us for the 2019 Annual Meeting Program, titled "Women Who Dared." You'll hear the amazing stories of women who cared about the state of the halls back in the 80s and the courageous women who worked hard to have KU recognize our Trust. If you don't know much about the lawsuit that the hall residents filed on behalf of all of us, or of the hard work to get Miller and Watkins included in the National Historic District, well then, you need to be in Lawrence April 27, 2019! And, of course, you can count on an appearance from Elizabeth Miller Watkins, the first woman who "dared" to bring her dream of Scholarship Halls to fruition.

**BY ELIZABETH (ERVIN) BOMAN &
PAT (JOLLY) PUTNAM**

K8 Annual Meeting Co-Chairs

K8 ELECTIONS & MEETING NOTICE

Kitchen 8, Inc. will hold its Annual Meeting at 9:30 A.M. on Sat., April 27, 2019 at Maceli's in Lawrence. The agenda will be election of new board members and officers. The meeting is open to all. There are openings and if you are interested in being on the Board or being an officer, or to place an item on the agenda, contact Elizabeth Boman at vicepresident@kitchen8.org.

All K8 members present at the Annual Meeting may vote. Voting online at www.kitchen8.org must be done by midnight April 20, 2019. The slate of candidates will be online as of March 15, 2019. Nominations will also be taken from the floor at the Annual Meeting.

2019 KITCHEN 8 WEEKEND SCHEDULE:

April 27-April 28, 2019

SATURDAY, APRIL 27, 2019

- 9:00 AM** *Meet and Greet at Maceli's, 1031 New Hampshire, Lawrence, Kansas*
- 9:30 AM** *Business Meeting, Elections, and Program*
"Women Who Dared" - Hear amazing stories of women who cared about the state of the halls back in the 80s and the courageous women who worked to have KU recognize our Trust. You'll learn about the lawsuit that the hall residents filed on behalf of all of us, and getting Miller and Watkins included in the National Historic District. You can count on an appearance from Elizabeth Miller Watkins, the first woman who "dared" to bring her dream of Scholarship Halls to fruition.
- 11:00 AM** *Celebratory Brunch with Watkins & Miller Residents and EMW Memorial Scholarship Recipients - During brunch, Pat and Liz will have another Trivia game to test your knowledge of Schol Hall History! Please consider a donation to cover brunch costs for a Watkins or Miller resident and/or EMW Scholarship recipient, who are all guests of Kitchen 8. RSVP BY APRIL 20. SEE INFORMATION BELOW.*
- 12:00 PM** *Elizabeth Miller Watkins Memorial Scholarship Award Presentation*
- 2:00 PM** *Watkins Museum of History, 1047 Massachusetts in Lawrence*
Join us to see Mrs. Watkins' personal scrapbook with Brittany Keegan, Archivist, and Sarah Bell will explain the new permanent display planned on Jabez & Elizabeth!
- 3:00 PM** *K-8 Board Meeting - Open to all Kitchen 8 members at Watkins Museum of History's Community Room, 1047 Massachusetts St.*
- 5:00 PM** *K-8 Board Reception for Outgoing Board Members - Open to all Kitchen 8 members at Watkins Museum of History's Community Room, 1047 Massachusetts St.*
- 7:00 PM** *Dutch Treat Drinks & Dinner together, Cielto Lindo, 815 New Hampshire*

SUNDAY, APRIL 28, 2019

- 2:00 PM** *Alumnae Teas at Watkins and Miller Halls*
- 4:30 PM** *Honoring "Lady Bountiful" Traditional visit to lay flowers on the grave of Elizabeth Miller Watkins at Oak Hill Cemetery, 1605 Oak Hill Ave., follow 13th St. east of Massachusetts St.)*

MEETING AND BRUNCH RESERVATIONS:

RSVP BY APRIL 20, 2019. THE COST FOR THE ANNUAL MEETING AND BRUNCH IS \$22 PER PERSON. YOU MAY RSVP AND PAY VIA ONE OF THE FOLLOWING METHODS:

- ONLINE:** www.kitchen8.org (Pay \$23 per person online with PayPal)
- EMAIL:** normahoagland@kitchen8.org (Pay \$22 per person at the door)
- PHONE:** 913-775-3685 (Pay \$22 per person at the door)

HOTEL RESERVATIONS:

Book your group rate for Kitchen 8 at 785-842-8800 or tps.foets.sales@marriott.com
TownePlace Suites by Marriott, 900 New Hampshire

A Summary OF THE LAWSUIT

Fighting to Keep EMW's Legacy Going in the Right Direction

The 2009 K8 Newsletter featured an article Watkins resident Emily Hane wrote about the legacy of EMW and a lawsuit that Watkins residents filed to protect that legacy. The following is a perspective about that lawsuit by one of the original plaintiffs.

More than 15 years ago, I joined a lawsuit originally initiated against the Bank of America as the Trustee of the Miller and Watkins scholarship halls. The lawsuit came to an end about 2000, but the impact of that suit is still felt, and new residents are unaware of the history. While there's much more to the story than I'll be able to cover in this article, I hope this provides some insight into our decision to take on the Bank, and later (at its own request) the University of Kansas.

The initial petition was filed in Douglas County District Court to challenge the Bank's annual accounting for, among other things, failure to report to the Court that nearly \$1 million in Watkins Trust funds were being held in a University of Kansas Endowment account. This initial action followed years of fruitless attempts by various alumnae and residents of Miller and Watkins Halls to meet with the University and the Bank in efforts to force expenditure of funds held in the Endowment account and

to manage the Trust as Elizabeth Miller Watkins had intended. Many of the same alumnae appeared in Court over the years to orally object to the annual accountings and question the allocation of Trust resources. Without counsel, their pleas and objections were not considered.

THE LAST STRAW

The badly deteriorating conditions of the halls and lack of changes in the halls firmly convinced residents and alumnae that the EMW Trust was not being administered properly and finally prompted initiation of the suit. For example, when I moved into Watkins in August 2000, Lawrence was the hottest place in the nation for several days. Watkins didn't have central air conditioning.

There were window air conditioning units in the two sleeping porches, the TV room, and the Council Room, but the TV room air conditioning unit was broken for the first few weeks of the semester. To cool off, we regularly went swimming in the Chancellor's Fountain or took over the Battenfeld living room.

During the next few months, the residents had some exciting moments. We discovered mice and roaches in our kitchens. Our toilets clogged on a regular basis, showers leaked from floor to floor, and we had problems with room lighting. In room 309, we would change the light bulb one day and have it burn out the next. K-1's refrigerator went out when its electrical outlet blew. When it rained, the laundry room and General Kitchen in the basement would flood, sometimes so much that we could watch the water run down the walls. We had cracks in the basement walls by the main hallway exit, and the outside shutters were missing. Our furniture and carpeting were stained and faded. Dishwashers and one of the two clothes dryers broke down frequently, and we had no water a few times. It wasn't quite the condition you would expect from halls with a Trust fund in place to take care of such things.

Before we filed the lawsuit, it took weeks to get things fixed at times, like plumbing, air conditioning and pest problems. In one case, our hall



ABOVE: Lindsay Poe Rousseau, one of the original "Women Who Dared", taken back in her Watkins' days.

proctor was so disgusted with the lack of attention to the pest problem that she captured a mouse in an empty food container and took it to the Housing department. After the lawsuit was filed, plans were in place to install air conditioning and correct the foundation. The University insisted this had been in the plans, but none of the residents had any knowledge of such plans. Several petitioners said they had been told air conditioning would be impossible in the halls because of fire code requirements for the seven kitchens or an inadequate electrical system.

WHO'S THE BENEFICIARY?

When the initial petition was filed, the Bank responded to the petitioners' initial petition by challenging their standing, saying that the students didn't have the legal right to bring the suit. The District Court sided with the students, ruling that the petitioners did have legal standing. The Bank appealed the decision to the Kansas Court of Appeals, who refused to hear the appeal, and then appealed it to the Kansas Supreme Court. The Kansas Supreme Court also refused to hear the appeal.

Once the standing issue was settled, the District Court ordered the Bank to provide additional information about funds held in the University of Kansas Endowment Association fund. When the question of legal fees came up, the Court ruled the Bank had a right to pay for legal expenses from the Trust and refused to order either side to pay the other side's attorney fees.

In 2001, the students filed a petition charging the Bank and the University with breaching their fiduciary duties to operate the Trust in a way that would carry out its intent. The students also alleged fraud and conversion, or deliberate misman-

agement of the Trust.

The Bank filed a motion to dismiss, basically stating that the students' case had no merit. Of all 20-plus allegations made by the students, the Court ruled that all, but one claim made by the students had enough merit to be included in the lawsuit.

After the Court refused to dismiss the suit, the Bank attempted to initiate discovery and wanted to depose all 26 petitioners. The students objected, arguing that the depositions would be a waste of time and Trust assets, since the Court had ruled that the Bank could pay its legal fees from the Trust.

KU – WHOSE SIDE ARE YOU ON?

In late 2001, the Court granted a motion filed by the University of Kansas that it be allowed to join the lawsuit. While the students had invited the University to join them in filing a suit against the Bank as Bank, the University entered the suit in opposition to the students.

After the University officially joined the suit, the Court ordered that four petitioners could be deposed as part of discovery. During those depositions, each student was questioned for a day as to the basis of the lawsuit. All petitioners also completed interrogatories or answered a list of questions regarding our reasons for joining the lawsuit and the condition and treatment of the halls. After discovery was mostly completed (the process whereby each side collects information from the others), the Court gave the petitioners a major victory when it ruled that the income from the Trust must be spent in the year in which it is earned and could not be held in any other kind of savings or investment account.

In 2003, other issues remained,

so all parties entered mediation, which was unsuccessful. In the next round of motions, the petitioners requested the Court appoint an independent auditor to determine the extent, if any, of financial losses created by placing Trust funds in the University's Endowment Association account. The Court granted the petitioners' motion to appoint an independent auditor but restricted the time period for review to five years. At this point, the lawsuit had been underway in some form since February 2000, or three years of that five-year period.

DOING WHAT'S BEST

In Spring 2003, the parties attempted to resolve the disputes, but again failed to agree. Nevertheless, upon studying audit reports, the petitioners determined that actual monetary damages for the five-year look-back period set by the Court would, at best, be minimal and that the petitioners' eventual victory actually would be harmful to the Trust. At that point, the petitioners voluntarily dismissed all but two of the claims pending against the Bank and the University.

One of the remaining claims was for a declaratory judgment ruling by the Court on the question of whether student residents of Watkins and Miller Halls should be treated equally with the University and should be consulted by the Bank before Trust funds were expended. The other remaining claim was for attorney fees. The Bank and the University did not oppose the petitioners' request to withdraw claims but did oppose the request for declaratory judgment and attorney fees.

In February 2004, the Court ruled that the students had no right to control or direct the spending of Trust funds. Further, it held it was

appropriate for the Bank to work with the University in determining how to spend Trust funds because the University was “owner” of the scholarship halls (although many petitioners disagreed with that assessment based on the Trust language). The Court also held its prior rulings on attorney fees would govern.

In May 2004, when the last of the petitioners were graduating, the Bank filed an accounting of its legal fees with the Court for approval, totaling about \$285,000. A month later, the University filed a motion requesting that the petitioners and their attorneys pay the \$285,553.75 legal bill. The petitioners in turn filed a response asking that the judge review the Bank’s charges and determine if they were appropriate for the length and nature of the case. The petitioners also asked the judge to have the Bank pay its own legal fees and that the judge decide how to best conclude the case overall.

THE END AND THE IMPACT

When the judge made his ruling, the Bank was ordered to collect only \$80,000 of its attorney fees from the Trust fund. Though the fact that any fees came from the Trust was disappointing, many of the petitioners were satisfied with the results of the suit. The halls received much-needed repairs over the course of the lawsuit and money that was being held at the Endowment Association was finally reported to the Court and ordered to be spent on the halls immediately.

However, Petitioners were, and still are, concerned about the rental rates for Miller and Watkins.

If you have questions about the lawsuit, please contact me at Lindsay.Rousseau@yahoo.com.

BY LINDSAY POE ROUSSEAU

W 2000-04

RENT RATES: *Increases for Miller and Watkins Halls*

We all have gratitude to Mrs. Watkins for her vision of a supportive, healthy living environment for young women while attending KU. She fervently wished to keep the rent charges as low as possible. In the terms of the Deed on Record No. 118 in which she gave Watkins Hall to the Kansas Board of Regents included was a restriction that the fees paid by the occupants “shall not exceed \$3.00 per month without unanimous written consent of a committee composed of C. E. Friend, A.B. Weaver and Dick Williams, or their successors.” This “Rent Setting Committee” failed to appoint their successors as each passed away, and KU Endowment went to Douglas County Court to enable them to set a new committee composed of the Chancellor,

CFO of KU and the President of the Board of KU Endowment.

The history of the rental charges reflects this change: in 1926, rent was \$27.00 per year; 45 years later, in 1971, it was \$95.00. Then the new Rent Setting Committee went into effect and another 45 years later, in 2016, the rent was \$2,716. The 2018 rate is \$2,834.00.

In 2009, Watkins and Miller Hall residents realized they need to record this history and stay informed of these changes. Each Hall added either a Rates Chair or added the duty of maintaining these records to their Treasurer.

Sam Bunnyfield, Watkins Hall 2003-07, pointed out in the K8

of the Hall Officers and Kitchen 8

ELIZABETH’S TRUST FOR WATKINS AND MILLER HALLS

IF YOU USE 4.7% AS A RETURN RATE COMPOUNDED TWICE A YEAR

(THESE ARE THE FIGURES KU ENDOWMENT USES IN CALCULATING AN ENDOWED SCHOLARSHIP)

THEN \$250,000 INVESTED IN 1939 (PER ELIZABETH’S WILL) WOULD BE WORTH ABOUT \$10.4 MILLION TODAY.

THE WATKINS AND MILLER TRUST HAS \$3.9 MILLION, AS REPORTED IN 2018.

Newsletter 2013, “If Watkins / Miller rents had been kept at the level Mrs. Watkins intended, residents would be paying only about \$500 per year to live in the halls, adjusted to 2011 dollars.”

High rent rates and the condition of the Halls brought the alumnae together to form Kitchen 8. Then, Kitchen 8 supported a group of women in the Halls to start a lawsuit to correct what KU had done with the money in the W&M Trust. That lawsuit is described on page 9.

Keeping our alumnae informed of these rates is an important function of the Hall Officers and Kitchen 8.

BY NORMA (DECKER) HOAGLAND

Kitchen 8 President

PRESIDENT'S PANTRY: *It has been a joy to serve as Kitchen 8's President*

DEAR LILAC LANE SISTERS,

In April of 2019, I will step down as your President. It has been my joy to work for K8 these many years and to be able to show gratitude for my gift from Elizabeth Watkins. My family could not afford to send me to college without my Watkins Hall 'gift of residence' and my general scholarship from KU. I truly cannot imagine what my life would have been without my university education and experiences.

Hopefully I have left my beloved organization in good shape. While I have been President, we established our first bylaws, and celebrated Elizabeth's 150th Birthday, Watkins Hall's 90th and Miller Hall's 80th! Guiding K8 through the process to become a 501(C) 3 nonprofit corporation was well worth the effort. I worked for more transparency in our scholarship program and to re-focus it on Hall residents.

Outside of K8, I lobbied to get Watkins & Miller into the East Campus Historic District on the National Historic Register. At that time, there was rumored to be a "new use" for the valuable real estate W&M sit on and only The Outlook (the Chancellor's residence) was on the historic preservation plan.

With approval from Historic Mount Oread Friends and financial help from my K8 sisters, I compiled Watkins & Miller Halls, the fourth book in the series on KU landmarks. With my research on Mrs. Watkins, I was asked to make presentations about her to a number of KU groups, raising awareness about the Watkins' philanthropy. When the 2016 renovations of W&M were being explored, I lobbied for positions on the oversight committee. Serving on that committee



ABOVE: Norma's favorite duty: awarding the Watkins & Miller Halls book to 4-year graduates.

with me were two current residents: Kaitlin Neill from Watkins and Steffie Villanueva from Miller. We not only served on the committee, but we made changes to the Hall renovations, which totaled over \$1 million on each Hall.

Getting a K8 member on the Rent Setting Committee was one goal I had always hoped to accomplish but did not. That needs to continue to be our goal.

However, my most precious takeaway from these years is all the treasured friendships I have now with Lilac Lane Sisters of all ages. I'm continuing my research and writing about Elizabeth, now with Mary Burchill, as we work together on the Watkins Biography.

I'm looking forward to many more years of being involved with K8 and the 100th anniversary of my dear Watkins Hall in 2026! Thank you for allowing me to be your President and for all the support and work you have also given to K8.

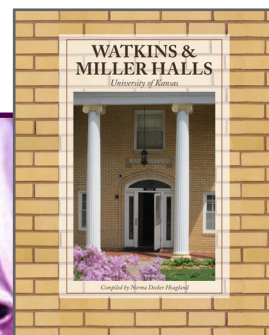
Lilac Lane Love to you,

BY NORMA (DECKER) HOAGLAND

W 1969-71, Kitchen 8 President



Watkins & Miller Halls, a book published by the Historic Mount Oread Friends, details the story of Elizabeth Miller Watkins and her development of the two scholarship halls at the University of Kansas. The book was compiled by Kitchen 8 President Norma (Decker) Hoagland and launched during our 2016 Kitchen 8 Annual Meeting in April.



To purchase your copy of the *Watkins & Miller Halls* book, order from the University Press website at

<http://kansaspress.ku.edu/978-0-7006-2275-7.html>

My Sweetheart OF LILAC LANE

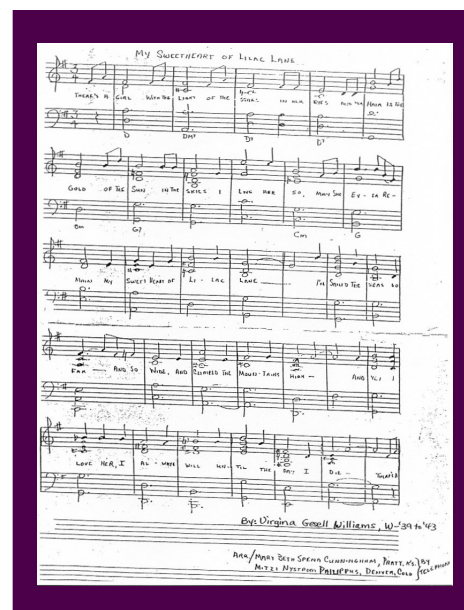
A Look at Watkins & Miller's Song

“There’s a girl with the light of the stars in her eyes...” is a familiar start to a song beloved by generations of women who have lived in Watkins and Miller halls since the early 1940s. The song itself, however important it has become to the identity of the halls, is a bit of a mystery.

We know the song of course as “My Sweetheart of Lilac Lane” written by Ginny Gsell. Pictured below, is Virginia “Ginny” Gsell, who lived in Watkins Hall the year this photograph was taken in 1943. The

caption of the photograph reads “Hostess at K.U.’s 75th Anniversary and Homecoming at commencement, June 1941. Pictures taken at gate to the home of the Chancellor.” After spending some time trying to confirm the story of Ginny, and what inspired her to write this song it occurred to me that perhaps getting to the bottom of why she wrote the song is not so important.

As a woman who graduated from KU. and subsequently Watkins Hall in 2010, I am struck by the pho-



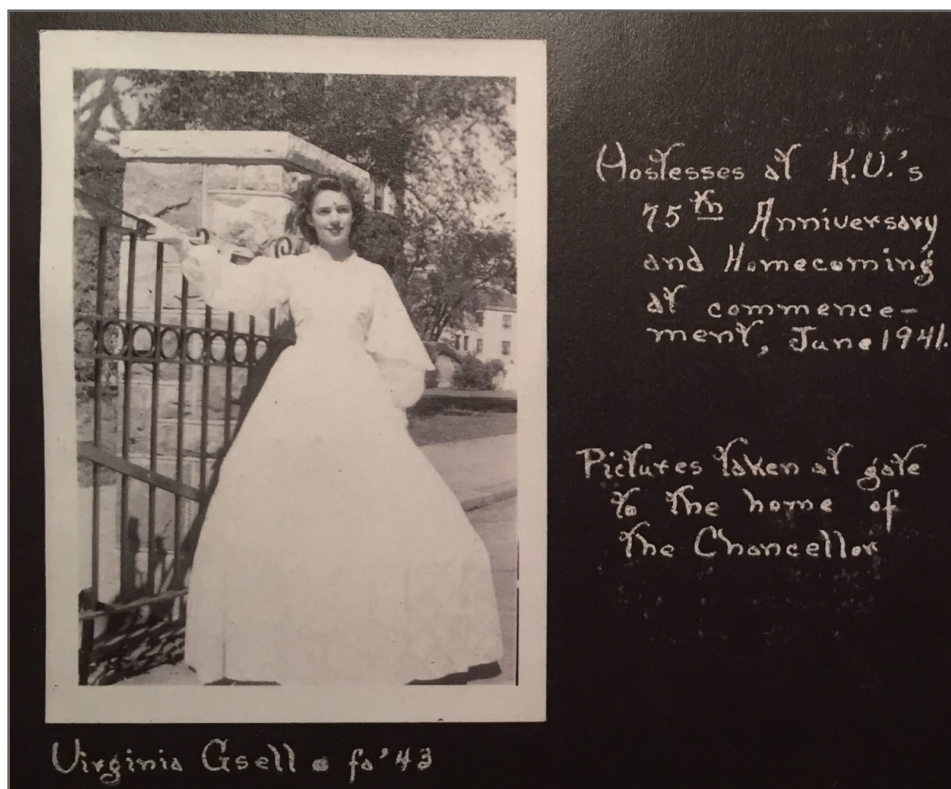
ABOVE: Handwritten Sheet Music to “My Sweetheart of Lilac Lane” with notations: By: Virginia Gsell Williams, W 39-43, Arranged by Mary Beth Spenn Cunningham, Pratt, KS. And Mitzi Nystrom Philippus, Denver, Colo. By Telephone.

tograph of Ginny taken in 1943, 67 years before I would graduate. Pictures like this of a Watkins or Miller woman posing in her finest before an event are commonplace in the halls, and are photographic milestones that take up several pages of hall scrapbooks as far back as they go. What can be surmised about Ginny is that she was a Watkins and Miller girl, just like the rest of us. Also, like the rest of us she left a mark on her home away from home at KU. While most of us won’t have a song that we wrote passed down for generations, the stories we share and the friendships we made while living in the halls are what makes this song so memorable and keeps the spirit of Elizabeth Miller Watkins alive today.

BY SARAH TAGGART GARTEN

K8 Historian

P.S. If anyone knows anything more about this song and its’ origins, please tell us! Email historian@kitchen8.org.



ABOVE: Virginia Gsell, fall of 1943. Photo from Janice Gartrell’s scrapbook, with thanks to Gayle Matchett.



FAR BACK ROW: Mandie Nech, Tobey Billinger
SECOND ROW: Megan (Stites) MacFarlane, Elena Larson, Abby Olcese, Sarah (Taggart) Garten, Anna Archibald, Mary Emerson Gomez
FRONT ROW: Lynne (Lammers) Coblammers, Erin Solis, Michelle Loewenstein, Kristen Cowan, Stevi Ballard. Michelle notes: This year (2019) will be 10 years for me, Mandie, Tobey, Mary, and Kristen. Last year was 10 years for Megan and Elena. 2020 will be 10 years for Abby, Sarah, Anna, Lynne, Erin, and Stevi.

10 Year Reunion ON LILAC LANE

Alumnae Weekend Keeps Them Connected

As hard as it is for me to believe, this spring will mark the 10-year anniversary for Miller and Watkins residents who graduated from KU in 2009 (like me). When I moved in to Watkins in 2005 as a freshman, I was one of 25 new women moving in to the hall that year (plus a couple of awesome mid-year transfers); an impressive percentage of us ended up staying in the hall four or five years, and many more stayed in touch regularly, even after moving out.

It's hard to believe that it's been 10 years since we graduated, and I think part of that is because so many of us have made it a point to meet up each year for Alumnae Weekend (and sometimes also at weddings, baby showers, mini-reunions, Friendsgiving celebrations, etc.). Furthermore, I feel so lucky

that when I think back on my time at Watkins and "my class," that I think of not just the people who moved in to Watkins in 2005, or the people who graduated in 2009, but also about the strong, inspiring women who were 1-3 years ahead of me who I was honored to call my close friends, the unbelievably fun, tight-knit group of women who moved in to Watkins in '06 (including several who we were lucky enough to steal away from their original schol halls), and the kind, brilliant women who joined us in '07 and '08. So even though it's officially the 10-year anniversary for the class of '09, I'm looking forward to spending the next three years (at least) celebrating 10-year reunions, because I feel like "my class" actually includes all of the women who lived in

Watkins during the four years (05-09) I lived there (and even into the 5th year when I spent the first two months of fall semester semi-squatting with my previous roommates Dory and Megan while I was looking for a full-time job)!

Although we haven't discussed specific plans for celebrating our 10-year reunion, I imagine it will look pretty similar to the Alumnae Weekend reunions we've had for the last 9 years – we'll have people traveling from all over to come back (depending on the year, we've had people traveling from Minnesota, Colorado, Spain, Utah, Chicago, Oklahoma, and on and on), we'll be introduced to newest members of the K8 family as people bring their toddlers and infants to the celebrations, and we'll probably end up at Celito Lindo at some point during the weekend, passing around the sunscreen while enjoying a few orders of chips and queso and a few pitchers of margaritas!

BY MICHELLE LOWENSTEIN

W 2005-09

building CONNECTIONS

Hall Residents and Kitchen 8 members bond throughout yearly activities

EMW'S 157TH BIRTHDAY PARTY

We had a great turnout for Lizzie's 157th birthday this year! We changed things up a bit and held the event at Watkins. We started out with cake and drinks, and of course pearls and presents! This year, the Watkins residents asked for a Roku, HDMI cables, and some bean bags. Miller residents got quite a stack of Judy's sheet music (piano, vocal, classical, and old popular), assorted food storage containers, a set of knives, Bananagrams, two Catan board games, and Classic Scrabble! This year we not only changed up the location but some of the festivities as well, so after enjoying refreshments and conversation, preparations were made for a movie night. Popcorn was popped, drinks

were made, and we watched an old favorite of Lizzie's: *Born to Dance*.

This event uses funds from the K8 Sugar Bowl Fund

BY STEVI BALLARD

K8 Watkins Campus Co-Coordinator

K8 MEMBERS AND NEW HALL RESIDENTS BOND AT NEW WOMEN DINNER

On September 12, Watkins Hall hosted the annual New Women's Dinner, inviting new residents of both Watkins and Miller Halls to join local K-8 members and current hall officers for a buffet dinner of salads and sweets. The evening marked the start of a new school year and provided a chance for past and present hall residents to connect



ABOVE: New Women enjoying the K8 Dinner. and celebrate the legacy of Elizabeth Miller Watkins. Around 65 K-8 members, new residents, and current hall officers attended the dinner.

New women were presented with a notebook containing information about Lizzie and the traditions steeped in her legacy, including the song "My Sweetheart of Lilac Lane" and the creed, which everyone in attendance recited in unison. Later on in the evening, new residents also had the chance to learn more about K-8 members and their time living in the halls. The women shared memories of how hall life has evolved, as well as what the social and political climate of their time entailed—one former resident even shared the story of how Watkins Hall members pitched in to help emergency responders when the student union caught fire in 1970. Before the evening concluded, new Miller women paired up with new Watkins women to tour the halls, all while celebrating the wonderful



FAR LEFT: Judy Niebaum speaks about the sheet music gift to Miller Hall. **AT LEFT:** At Elizabeth's Birthday Party, we watched "Born To Dance" one of her favorite movies.



ABOVE: Watkins women cooked up lots of treats for their Alumnae!

woman who is still providing opportunities to women at the University nearly a century later. **This event uses funds from the K8 Sugar Bowl Fund.*

BY ANNA ARCHIBALD

Former Watkins Resident & K8 Member

WATKINS & MILLER WELCOME THEIR ALUMNAE FOR 2018 TEA

As an alumnae, when you walk through that door again, you immediately feel 18 again! The current residents are so welcoming and have gone to a great deal of work to make the Halls shine. You may go see your “old” room, if you wish, and there are treats and more treats to eat! Coffee and tea are served and you can share your memories and hear about life at KU in the cur-

rent day. What a lovely day it was on April 29, 2018, at Watkins and Miller Alumnae Teas!

There are differences between the Teas, be-

tween Watkins & Miller, as always: Miller clears out their living room and sets up chairs in rows, for entertainment. They ask any visiting alumnae to tell their memories of living in Miller. Watkins is less formal, having party games this year, and the legendary Watkins Scrapbooks are on display in the TV room, lower level, to the delight of visiting alumnae.

Each year, the Watkins & Miller Halls book is given as a gift from K8 to each 4-year graduating resident, as a token of our appreciation for their dedication to Mrs. Watkins’ idea of communal living. Here are photos of that presentation by K8 President, Norma Hoagland along with the K8 Campus Coordinators: for Watkins Hall, Camille Olcese and Stevi Ballard; and for

Miller Hall, Judy Niebaum. Other Miller four-year residents receiving their book were: Victoria Bogner, Rosanna Chan, Haley Flickinger, Gantsatsral Ganpurev, Brenna Hipsher, Elle Perkins, Allison Schwartz, Steffie Villanueva and Hannah Walker. Not pictured in the Watkins presentation photo is Kristy Mo, another four-year graduate. **This event uses money from the K8 Sugar Bowl Fund for the books awarded to 4-year graduates.**

2018 K8 & WATKINS HALL ACTIVITIES

PLANNING MEETING FOR THE YEAR

The week before classes start is a busy week for Watkins and Miller officers as they prepare for the arrival of the new residents and plan the events for the year. That week the Kitchen 8 co-coordinators for Watkins, Stevi Ballard and Camille Olcese, met with the Watkins alumni chair, Pooja Poladia and Watkins president, Kiara Holtkamp to set dates for the K8 and alumni events.

The New Women's Dinner was held Sept. 12. The birthday party for Elizabeth Miller Watkins will be



ABOVE LEFT: Norma and Judy Niebaum, K8’s Campus Coordinator for Miller Hall, present our book to 4-year resident Hannah Walker, former Miller President. Other Miller 4-year graduates receiving their book were: Victoria Bogner, Rosanna Chan, Haley Flickinger, Gantsatsral Ganpurev, Brenna Hipsher, Elle Perkins, Allison Schwartz and Steffie Villanueva. **ABOVE RIGHT:** Norma, Stevi Ballard, K8 Campus Co-Coordinator for Watkins Hall, Sam Ritchie, Alissa Kastendick and Camille Olcese, K8 Campus Co-Coordinator for Watkins Hall, as these 4-year graduates receive their “Watkins & Miller Hall” book. Not pictured is Kristy Mo, another Watkins 4-year graduate.

held Jan. 29 at one of the halls, to be determined. We also are planning a workshop for applicants for the EMW Memorial Scholarship. This will be in early February, in time to meet the early March deadline for applications. Finally, the date for the alumnae tea was set: April 28, 2019. We all anticipate another great year of new friendships and fond memories.

CHILI SUPPER WITH WATKINS WOMEN

Camille Olcese and Stevi Ballard, Kitchen 8 co-coordinators for Watkins Hall, hosted a chili supper for the Watkins women in Camille's Lawrence home the evening of October 19. Eleven Watkins women joined Camille, Stevi, and Abby Olcese, a Watkins alumna, for chili and cinnamon rolls. After dinner, a rousing game of Halloween taboo and charades had everyone laughing. The evening was a welcome break from campus life for the Watkins women, and Camille, Stevi and Abby were able to get better acquainted with them.

LOUD HOUR & CHRISTMAS COOKIES AT WATKINS

The residents of Watkins Hall invited their alumnae to join them for a cookie decorating party during "Loud Hour," Monday, Dec. 10, from 7:00 PM to 8:00 PM.

What is Loud Hour, you ask? It's a time every night during finals week when residents can take a break from studying for one hour and be as loud as they want. Camille, their K8 Watkins Hall liaison, provided sugar cookies and decorating supplies. The girls took a break and had a chance to have fun with the Watkins alumnae, decorating cookies!

BY CAMILLE (ICENOGL) OLCESE

K8 Watkins Hall Campus Co-Coordinator



ABOVE: Chili Supper at Camille's home for Watkins residents. **AT LEFT:** Enjoying conversation with Chili. **BELOW:** Pooja Poladia, Watkins Hall Alumnae Co-Chair (fellow Co-Chair Zoe Weland not pictured) and Kiara Holtkamp, Watkins President, were a great help to K8.



ABOVE: Watkins women really enjoyed decorating cookies at Loud Hour.

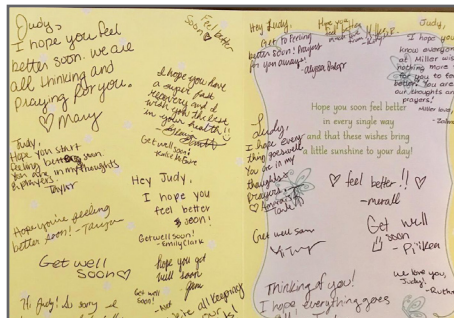
2018 K8 & MILLER HALL ACTIVITIES

MILLER RESIDENTS REACH OUT TO THEIR K8 MILLER CAMPUS COORDINATOR

Judy (Johnson) Niebaum, K8's Miller Hall Campus Coordinator, shows (at right) the sweet gifts brought to her by the Miller women, following her medical heart procedure. Although this procedure slowed Judy down for a bit this fall, she was back at Miller to decorate the Christmas tree!

CHRISTMAS TREE DECORATING AT MILLER

Judy shares this picture from November 29th, decorating the Christmas tree at Miller Hall. She said "Sweet memories of our family's tree and ornaments felt good as we unpacked and hung them on the tree. The women shared the evening with thoughtful words of 'thanks' !! I baked oatmeal raisin



cookies for the event and they were appreciated too!!" Judy had donated her Christmas tree and ornaments to Miller Hall in 2017 and each year, the women invite her back



ABOVE: Amaris Towle, Zalma Molina, Elizabeth Newell and "Santa" Christine Damsgaard, all surrounding Judy and the Miller Christmas tree.

to help decorate Miller Hall for Christmas.

BY JUDY (JOHNSON) NIEBAUM

K8 Miller Campus Coordinator

PRESIDENT

Norma (Decker) Hoagland, W 69-71
president@kitchen8.org

VICE-PRESIDENT

Elizabeth (Ervin) Boman, W 70-74
vicepresident@kitchen8.org

SECRETARY

Paula (Hopkins) Wrigley, M 03-07
membership@kitchen8.org

TREASURER

Elena Wahbeh, W 70-73
treasurer@kitchen8.org

HISTORIAN

Sarah (Taggart) Garten, W 08-12
historian@kitchen8.org

WATKINS CAMPUS COORDINATORS

Camille (Icenogle) Olcese, W 71-74
Stevi Ballard, W 06-10
watkinscoordinator@kitchen8.org

MILLER CAMPUS COORDINATOR

Judy (Johnson) Niebaum, M 58-61
millercoordinator@kitchen8.org



LIZZIE'S LEGACIES COORDINATORS

Gayle (Barry) Matchett, W 55-57
Emily Hane, W 08-10
lizzieslegacies@kitchen8.org

SCHOLARSHIP SELECTION CHAIR

Susan (Harshaw) Kissinger, W 70-74
scholarship@kitchen8.org

EMW MEMORIAL SCHOLARSHIP FUND ADVISORY COMMITTEE CHAIR

Valentine Baumann O'Kane, W 03-05
advisory@kitchen8.org

MENTORING CHAIRS

Cathie (Fuller) Miller, W 70-73
Sarah Greenup, W 08-12
mentoring@kitchen8.org

WEBSITE / NEWSLETTER CHAIR

Sarah (Wohlrabe) Shortall, W 72-76
communications@kitchen8.org

MAGAZINE DESIGNER & WEBSITE COORDINATOR

Stephanie (McDuff) Hamby, D 95-97
website@kitchen8.org

THE K8 MAGAZINE GIVES SPECIAL THANKS TO:

Norma Hoagland, *Editor*
Michelle Loewenstein, *Editor and Contributor*

Lindsay Poe Rousseau, *Contributor*
Sarah (Taggart) Garten, *K8 Historian and Contributor*

Susan Harshaw Kissinger, *EMWM Scholarship Chair and Contributor*
Zalma Molina, *Miller Hall Alumnae Chair*

Pooja Poladia and Zoe Weland, *Watkins Hall Alumnae Co-Chairs*
And all of our contributors!!



Lizzie's LEGACIES

CONNECTING PAST AND PRESENT EMW MEMORIAL SCHOLARSHIP RECIPIENTS

Kitchen8 entertained Lizzie's Legacies at the 1890's dinner hosted by Watkins Museum of History in the newly restored Crystal Room of the Eldridge Hotel October 18th, 2018. The menu was typical of what J.B. Watkins may have had for dinner at that time. Dessert was hardtack, elderberry jam and tapioca – what JB might have ordered, we're told.

Gayle Matchett said "My favorite time of the evening, besides 'showing off' our beautiful students to Douglas County, was getting to know one student a little better. Ashley Farrow came to KU from Arizona.

She was enthusiastic about the faculty she met on her KU visit - and - it snowed! Because she can complete a masters in five years instead of six from an A+ school, she felt the out of state tuition justified. She is working two jobs that she mentioned; as RD of Downs and now GSP



and as a server at Oread/Eldridge hotels so she knew some of the serving staff.

Gayle and Emily Hane, Co-Chairs of the Lizzie's Legacies support group, reported, "We're planning a second semester informal supper in February. Local K8 Members - Help Welcome!"

BY GAYLE (BARRY) MATCHETT

Lizzie's Legacies Co-Coordinator

ABOVE AND LEFT: K8 members enjoyed the evening with EMW Memorial Scholarship Recipients, past and present. **BELOW RIGHT:** We hear the "hardtack and tapioca" was much better than expected.



celebrating SISTERHOOD

2018 Annual Meeting bridges hall life from "Housemothers to SHD's"

KITCHEN 8 ANNUAL MEETING PROGRAM

The 2018 Annual Meeting Program, "Housemothers to SHDs", performed by a talented cast of former and present residents of Watkins and Miller Halls, transported the audience from 2018 back to 1926 where they met with Elizabeth Miller Watkins as she poured herself into planning every detail of the design of the first Scholarship hall in the nation. Vice President Elizabeth Boman, Annual Meeting Co-Chair Pat Putnam, and Watkins Campus Co-Coordinator Camille Olcese wrote a wildly entertaining script telling the tales of various Housemothers, Resident Directors, and Scholarship Hall Directors of Watkins and Miller throughout the years. It was punctuated by amusing musical parodies highlighting how life in the halls has and has not changed! Elizabeth Miller Watkins, played by Gayle Matchett, as narrator guided us through the years from 1926 when the building was built, to the present. Throughout the program, "Housemothers" and "SHDs" spoke about what the Halls and KU were like during their tenure.

Various members of Kitchen 8 and friends acted their hearts out in the production. "Housemother" Mrs.

R.C. Morrow let us know the 1926 house rules regarding Watkins Hall's beautiful formal staircase. She told us the staircase is to be used "only on special occasions," when our young ladies are "appropriately dressed." She added, "This is where they can meet their men friends, as gentlemen are allowed no further into the hall than the lobby." "Mother Stayton" remembers EMW as a friend who offered her the "excellent wage" of \$700/year to shepherd the women of Miller Hall from 1937 thru 1944.

Those depression and pre-World War II years brought privations for all American women, as demonstrated during a visit to the halls

by First Lady Eleanor Roosevelt. Stockings were in short supply in those Depression days. During the Mrs. Roosevelt's visit, Watkins woman Corrine Martin, appalled by what she saw, commented, "All the buzz was that the First Lady, the wife of the President of the United States, had a run in her hose!" Corrine's sister, Helen who lived in Miller Hall, remarked that Eleanor's slip was showing, too!

As the program progressed, the "housemother's" stories advanced forward to the 1950s and into the turbulent 60's. One housemother in the 1950s had the difficult task of dismissing a Watkins Woman who had become pregnant while living at the halls. In the '60s, Watkins became the first scholarship hall to allow men up on the floors and to ban Freshman initiation.

However, during those same years, both halls continued to serve their "housemother" a Sunday meal, rotating the privilege of hosting her among the seven kitchens. And, as our resident songstress, Camille Icenogle Olcese, sang in her parody of "As Time Goes By", that even in the '60s and '70s many other important things remained the same.



ABOVE: The Cast of 'Housemothers to SHDs': Back Row, Standing: Elena Wahbeh, Kaitlin Neill, Annie Lundeen, Camille Olcese, Stevi Ballard, Kellie Hogan, Michelle Loewenstein, Margaret Heisel, Paula Hopkins Wrigley, Judy Johnson Niebaum, Elizabeth Ervin Boman; Seated: Norma Decker Hoagland, Alica Thomas, portraying Mrs. Watkins was Gayle Barry Matchett; Seated on floor: Pat Jolly Putnam.

*"You must remember this
A kiss is just a kiss
A sigh is just a sigh
But please don't do it in the living room,
It's gross that's why.
And when two lovers woo
They still say "I love you"
On that you can rely
A candlelighting's in their future
As time goes by
Romance and "Rock Chalk"
Never out of date
Ask him to dinner
He'll reciprocate
Need an engagement before I graduate
On that you can rely.
It's still the same old story
We hope for wedding glory
And though the years they fly
Lilac Lane will welcome lovers,
As time goes by."*

A highlight of the program was the "in person" appearance by several actual "housemothers," now termed "Resident Director." Margaret Heisel, 1969 recalled supervising Watkins Hall during the KU Vietnam protest marches, the civil rights movement, and the burning of the Kansas Student Union. Kellie Hogan, Miller Hall, 1993-95, reminisced that she "tried to stay in touch with the women in the hall by sitting in the foyer and doing the New York Times crossword" thus allowing her to check-in with the women as they came and went.

Our retrospective EMW reflected on the dramatic change from Housemother or Resident Directors to Scholarship Hall Directors, stating, "In the Fall of 2007, for the first time, two halls shared a Scholarship Hall Director, or SHD. Watkins and Battenfeld shared a male SHD while Miller and Pearson shared a female SHD. And, now the lovely apartment I designed for Housemothers, is being used for SHD's living or office space."

Graduate student Tyler James Treptow-Bowman, Watkins Hall,

2014-16, sent his written memories of how he experienced the "joys" of supervising a 1926-era building while becoming acquainted with the term "gray water." He told the audience at the annual meeting program, "Although bad pipes had plagued Watkins for years, the years I spent in the hall were frequented by what are commonly referred to as the "poop rains." That sounds like the low point of SHD experiences!

Annie Lundeen, the current director of Miller Hall, had a more positive encounter with hall life. Her partner in a move-in day event gave her a beautiful key chain that she said, "I still use, reminding me that I had found a welcoming home to start my grad school experience. This event changed my perspective of the halls and enabled me to see Elizabeth Miller Watkins's vision come to life."

Camille Icenogle Olcese sang her rendition of the song, "The Times, They Are A'Changin'." It summed up her thoughts of the things that have changed and those that have remained constant since Watkins Hall was built in 1926.

*"Come gather 'round Jayhawks
Wherever you roam
And admit that the old hall
You used to call home
It looks much the same
But some things you have known
Well some of those things weren't worth
savin'
So you'd better look around
And get used to what's new
For the halls they are a-changin'."*



ABOVE: Young Theo Draxler Sixta (center) meets all his Kitchen 8 "Aunties" at the K8 Annual Meeting. **AT LEFT:** Beautiful centerpieces with the Halls' panoramic photo.



*We used to have curfews
And house mothers all
We used to have buzzers
When we got a call
We used to bake brownies
With marijuanaaaa
No I'm not tellin' who
That I'm namin'.
But one of my roommates
Had good recipes
But the times they are a-changin'.*

*Elizabeth Watkins
she wanted to see
The girls who walk uphill
should get their degree
She gave us a home
And we're grateful you see
And although the halls
May be different some ways
We still help each other
That's the Lilac Lane way
There are some things that are not changin'."*

As the program drew to a close, Elizabeth Miller Watkins shared her final thoughts as she contemplated all that has happened in the halls, and how her vision to help "girls who must travel uphill" has remained through it all. She told the listeners, "Ladies, it's been quite a journey, sometimes uphill for many of you. Don't you think it was a good investment?" Yes, Elizabeth, indeed we do!

2018 ANNUAL BRUNCH

The entertaining and educational program was followed by a delightful brunch during which we played an informal “Housemothers to SHDs” trivia game. If you had listened carefully to the program, you were likely to get many of the trivia questions right. For example, you would have known that even though dogs weren’t allowed in the halls, housemother Mrs. Esterly’s dog was named “Poquita.” Or, you might have recognized that it was Mother Roche who instructed her girls in how to say “Goodnight” to their dates on the front porch with “Now girls, a squeeze on the arm is sufficient.” The recipients of the Elizabeth Miller Watkins Memorial Scholarship for the 2018-19 academic year were introduced by Advisory Committee Chair Valentine Baumann O’Kane. It was an amazing group of young women and Kitchen 8 is proud to have been able to help them in their quest to “travel uphill” and get a world-class education at the University of Kansas.

DEBRUCE CENTER TOUR ENHANCES 2018 EVENTS

Following the K8 Annual Meeting and Scholarship Awards Brunch, a group of K8’ers traveled to Allen Fieldhouse, where a tour of James Naismith’s original “Rules of Basketball” are housed in the new DeBruce Center, built adjacent to the Fieldhouse. A tour guide led us through the KU Athletic Hall of Fame, where we admired the original Jayhawk mascot uniform. We were amazed to hear the original “Take Heed, All Who Enter, Beware of The Phog!” banner on



ABOVE: Kitchen 8 members pause for a close-up with James Naismith. **AT RIGHT:** Ladies toured the DeBruce Center’s KU sports memorabilia, including the first mascot.

display there was student-made of shower curtains! The awards and athletic records memorialized there are extremely numerous and made our Jayhawk hearts glad.

The actual “Rules of Basketball” were most interesting, with much different rules than today’s game. No dribbling! They are written on two pages of notebook paper, protected under low light and heavy glass, as befits their important status.

To end our tour, we posed with the statue of James Naismith. Those attending were: (Seated) Elizabeth Ervin Boman; Front row: Karen Kreuger, Cathie Fuller Miller, Mandie Nech, “James Naismith”, Mary Emerson Gomez; Back row: Norma Decker Hoagland, Kristen Cowan, Dr. Annette Smith, Alica Thomas, Gayle Barry Matchett and Kellie Hogan.

DUTCH TREAT DINNER, TIME TO PUT FEET UP

Saturday is always a full day on K8 weekends! After the Annual Meeting



ABOVE: Ladies relax by putting their feet up after the 2018 Dutch Treat Dinner.



and Program, Scholarship Awards Brunch, Tour of DeBruce Center, a Dutch-Treat Dinner was planned for a Mexican restaurant adjacent to the hotel in downtown Lawrence. We took over a large part of the restaurant and several husbands and children joined in the fun! After dinner, and LOTS of conversation, several of us retreated to the hotel courtyard, where a fire was blazing in the cool April evening air. You can see the restful result!! Feet Up!

JOIN US AT THE 2019 KITCHEN 8 WEEKEND

We invite you to join us for the 2019 Annual Meeting titled “Women Who Dared.” You’ll hear the amazing stories of women who cared about the state of the halls back in the 80s and the courageous women who worked hard to have KU recognize our Trust. If you don’t know much about the lawsuit that the hall residents filed on behalf of all of us, or of the hard work to get Miller and Watkins included in the National Historic District, well then, you need to be in Lawrence April 27, 2019. And, of course, you can count on an appearance from Elizabeth Miller Watkins, the first woman who “dared” to bring her dream of Scholarship Halls to fruition.

BY PAT (JOLLY) PUTNAM

Annual Meeting Committee Co-Chair

scholarship COMMITTEE

Changes in Focus and New Scoring Rubric

To honor the generous legacy of Mrs. Watkins, past residents of Watkins and Miller Halls, through Kitchen 8, established the Elizabeth Miller Watkins Memorial Scholarship Fund in 1998.

We would like to thank all who have donated. It is amazing how one woman's vision can impact so many women's lives.

Kitchen 8 established the fund for women attending KU as an expression of their appreciation for receiving an outstanding education

through Elizabeth Miller Watkins' generosity and their desire to extend the opportunity they were given to today's young women. The EMWMSF scholarships are awarded based on outstanding scholastic achievement (at least a 3.0 GPA) and demonstrated financial need to complete their education at KU.

We welcome contributions to the Elizabeth Miller Watkins Memorial Scholarship Fund so we can continue funding scholarships for remarkable young women as they



ABOVE: The 2018-2019 Elizabeth Miller Watkins Memorial Scholarship Recipients gather at the Celebratory Brunch during the 2018 Kitchen 8 Weekend.

pursue their educational goals.

ONLINE DONATIONS: To make a donation, please go to: <https://gkccfonline.com/donations.org/give/watk01.asp> and select the "Donate Now" button or go to www.kitchen8.org/donate.

MAIL DONATIONS: To make a donation by check, please mail or deliver a check made payable to Elizabeth Miller Watkins Memorial Scholarship Fund to:

Greater Kansas City Community Foundation
1055 Broadway Blvd., Suite 130
Kansas City, MO 64105

BY VALENTINE BAUMANN O'KANE

*EMW Memorial Scholarship Advisory
Committee Chair*

CHANGES TO EMW MEMORIAL SCHOLARSHIP

In 2017, the growing concerns of members over the Elizabeth Miller Watkins Memorial Scholarship were brought to the attention of the Board. That year, no scholarships had been awarded to Watkins or Miller women. Some members even expressed surprise that the scholarships had been given in the past to women who had never lived in the Halls.

It took two years to reach a compromise from the polarized views. It was agreed that the EMWMS awards would continue to be available to all KU women, but there should be a clear preference for women who have lived in the Halls. In addition, it was decided that each year two new scholarships per hall would be earmarked for current residents before awarding any others. Perhaps the greatest change was a strong spending limitation in the new Establishing Document with the Greater Kansas City Commu-

nity Foundation that administers our scholarship program. In recent years, the suggested limit of 5% of the fund each year for scholarship funding had been largely ignored. Last year we awarded 12 new scholarships and renewed 14 others. The cost of doing so was well over the 5% level. In the past, the advisory committee themselves could simply approve spending more. Some advisory board members even spoke of spending the fund down. Now, that will be much more difficult. It would take a unanimous vote of the entire K8 Board to exceed spending more than 5% of the Fund balance. GKCCF even said these changes reflect on the good stewardship of K8 concerning the sustainability of the EMWMS Fund. We can now rest assured that the scholarship fund will be available for many generations to come.

Based on these changes, a new Establishing Document was written by Greater Kansas City Community Foundation and the Kitchen 8 Board members had a chance to vote on it. It was easily approved and went into effect in October of 2018.

There was a great deal of passion and debate on all sides. One member insisted the original intent of the EMWMS was to provide aid to any KU woman and that no preference should be given to residents of W&M Halls. However, reviewing the letters written by Janice Gartrell, who is the Fund's largest donor to date, she only referenced "Watkins Hall." She wrote nearly a dozen letters about the use of her money either for loans or scholarships. There was no mention by her of making money available to any KU woman. There was even a note between the women establishing that original fund asking "what will we do if there are objections to

awarding money to non-Watkins Hall women?" So clearly, although the trend in the past 10 years has been to award to "all KU women", the focus of most donors has been for the women in the Halls.

The scholarship program is part of Kitchen 8. Our members are the readers for the scholarship applications, elect the EMWMS Advisory Chair, and the Scholarship Selection Committee Chair. We advertise the EMWM Scholarship on our K8 website and in our yearly report magazine. Much of the money given recently to the Fund has come from readers of the K8 magazine. Our members advertise the EMWM Scholarship around campus by putting out flyers and contacting University departments. We hold an Awards Brunch to honor our EMWMS recipients. After awarding 26 scholarships in 2018, Kitchen 8 spent \$900 more than it took in on providing complimentary meals for each recipient and guest.

Many of our Kitchen 8 members say the scholarship program is "the best thing we do." It is a big focus of K8 and hopefully, with these contentious issues behind us, we can all work together to improve the transparency of the scholarship program so that our members are even more aware and even more proud of the work Kitchen 8 does.

BY NORMA (DECKER) HOAGLAND

Kitchen 8 President

PROPOSED NEW SCHOLARSHIP RUBRIC

The following is the proposed scoring rubric for evaluating EMWMS Fund scholarship applications in the 2019-2020 selection process, submitted by Susan (Harshaw) Kissinger, Chair of the Scholarship

Selection Committee.

<i>First in family to attend college</i>	10
<i>Watkins/Miller resident</i>	10
<i>Rate financial need</i>	20
<i>Rate academic effort</i>	15
<i>Rate EMW essay</i>	30
<i>Rate activities and commitments</i>	15

1. Effective with the 2019-2020 selection process, the EMWMS Fund organizing document requires that a minimum of four new scholarships granted each year will go to Watkins & Miller residents. A consolidated ranking will be developed based on reviewer input (using approved rubric). Then, the two highest ranking applications from Miller residents and the two highest ranking applications from Watkins residents will be moved to the top of the list.

2. Scoring rubric criteria include two preferences required by the current Fund organizing document.

a. Effective with the 2009 revision to the Fund organizing document, preference is given to individuals who are first in their family to attend college.

b. Effective with the 2019-2020 selection process, and the 2018 revision of the EMWMS Fund organizing document, preference is given to Watkins and Miller residents.

3. Effective with the original 1998 Fund organizing document and continued in subsequent Fund organizing documents:

a. ***Applicants must demonstrate financial need. Individuals who do not demonstrate financial need will be disqualified. The determination of financial need is an imprecise process that continues to be refined. A ranking based on reported financial***

information, as well as subjective information provided in essays, impacts assessment of financial need.

b. Applicants must demonstrate that they meet a minimum GPA requirement of 3.0 on a 4 point scale. Applicants who do not provide required supporting transcripts and/or who do not meet the minimum GPA requirement will be disqualified and not assigned to reviewers. In addition to GPA, applicants have an opportunity to share their academic dreams and how education has impacted their lives.

4. Applicants are required to complete an essay of no more than 500 words which responds to the biography of Elizabeth Miller Watkins. This essay is extremely important to reviewers in assessing applications. This essay is an opportunity for applicants to share their understanding of EMW's values and to compare and contrast their personal experience and values with those of EMW.

5. During the past six years, reviewers have consistently been interested in applicants' activities and commitments as important insight into applicants' values and priorities.

For those wishing to better understand the application process, you can find published eligibility guidelines, review the online application questions, and read Elizabeth Miller Watkins' biography using the following links:

- **FIRST TIME APPLICANTS:**
gkccf.academicworks.com/opportunities/1339
- **RENEWAL APPLICANTS:**
gkccf.academicworks.com/opportunities/1345

If you would like to serve on the Selection Committee, please contact Susan at scholarship@kitchen8.org.

BY SUSAN (HARSHAW) KISSINGER

EMW Memorial Scholarship Selection Committee
Chair

HER LEGACY

Our Inspiration

To honor the generous legacy of Mrs. Watkins, past residents of Watkins and Miller Halls, through Kitchen 8, established the Elizabeth Miller Watkins Memorial Scholarship Fund in 1998. The Fund began with a few hundred dollars awarded \$80,000 in scholarships in 2018-2019. We would like to thank all who have donated. It is amazing how one woman's vision can impact the lives of so many women.

ELIZABETH MILLER WATKINS was born in 1861 in New Paris, Ohio, daughter of a Civil War doctor. When Elizabeth was 11, her family moved to Lawrence where she enrolled in the KU Prep School. Sadly, after only 2 years, she was forced to drop out and help support her family. Elizabeth would later turn her own unfulfilled dream of an education into a legacy for generations of women to come.



At 15 she began work at the J B Watkins Land and Mortgage Co. She and JB were married in 1909. They had no children of their own and after JB's death in 1921, she turned her attention to the plans of giving she and JB had made. With a \$75,000 donation in 1925, Watkins Hall opened in 1926, the first scholarship hall in America. Building on that success, Miller Hall opened in 1937. Mrs. Watkins also created and gave a trust to provide for the maintenance and upkeep of both halls, which is still active today.

JANICE GARTRELL lived in Watkins Scholarship Hall from 1939-1942. She was known as "Giggles" and "Garter" to her friends at Watkins. She enjoyed her roommates, taking pictures and she excelled academically. She had an outstanding career in the oil business and loved to travel. After her passing in March of 2009, the EMWMSF received the funds of the Janice Gartrell Charitable Remainder Trust, enabling Kitchen 8 to award generous scholarships to deserving young KU women. Janice Gartrell was truly a woman who embodied Mrs. Watkins' legacy.





*Elizabeth Miller Watkins
Memorial Scholarship*

2018-2019 AWARD RECIPIENTS

AUBREY BURGESS

Wichita, Kansas

Aubrey will be a senior majoring in Graphic Design. Last year, while assessing her academic path, she changed from and then reinstated her design major. She shared that this process allowed her “to reassess my values and realize the importance of being pushed to be better.” Aubrey wrote “my experiences with people have been the most vital component of my education.” She looks forward to making connections with individuals that expand her “understanding of what it means to be a human.” She has been an active leader at Watkins Scholarship Hall where she has lived for three years and aspires to carry on the values that older residents have given her.



AUBRIE STRICKER

Gardner, Kansas

Aubrie, the first female in her family to attend college, will be a senior majoring in Molecular, Cellular and Developmental Biology. She plans to continue on to graduate school to obtain a Ph.D. in biomedical research. Aubrie grew up on a farm where she learned the value of commitment and challenging work, both of which she has applied to her college life. Aubrie describes her involvement in undergraduate research as her “most impactful education experience” resulting in “several successes including multiple presentations, awards and a publication.” She also wrote: “I have had incredible mentorship along my undergraduate journey and that is something I hope to be able to pass on to others.”



BREA WALKLEY

Baxter Springs, Kansas

Brea, a first-generation college student, will be a senior majoring in Community Health. She plans to attend graduate school for Occupational Therapy. In her application, she wrote of her dreams to work in pediatric oncology to help children during and after treatment “get back to their activities of daily living. But most importantly, getting them back. . .to be kids again so one day they’ll be able to pursue their dreams just like I’m trying to pursue mine.” She wrote about Mrs. Watkins concern that health services be accessible. Brea is relieved that, while at KU, she is able to receive quality health care at a reasonable cost through Watkins Health Services.



CARLY CONROY

De Soto, Kansas

Carly, a first generation college student, will be a freshman with a pre-medicine focus. She recently completed a Certified Nurse Assistant course which helped to solidify her choice to pursue a career in healthcare. Carly shared: “For me, learning new information that interests me is euphoric. When you really dive deep into learning something new, all of your problems that seem so big at the time will melt away before your eyes.” She writes of Mrs. Watkins: “She never let anything hold her back from her true potential, and up to this point, I haven’t either.”



HAILEY SOLOMON

Osewego, Kansas

Hailey will be a junior majoring in civil engineering. She hopes to use her degree to build homes, bridges, and water treatment facilities in third-world countries. Hailey founded an organization called Warm the World, where members of the community can come together to make warm clothes for the homeless. She shared: “If I could choose only one quality to be remembered by, I would want it to be kindness, which is a goal I



believe Mrs. Watkins also nurtured . . . Mrs. Watkins believed in the power of one person and the remarkable potential each individual has that will awaken when he/she is simply given the opportunity.”

JAMIE TRETO

Garden City, Kansas

Jamie, a first-generation college student, will be a senior majoring in political science with a pre-law emphasis. She shared: “The field of immigration is where my interest is at, because as a daughter of two former immigrants, I know how difficult it is to find people who care about undocumented people’s rights.” Jamie shared that like Mrs. Watkins, her mother had to drop out of school at a young age. Her mother instilled in Jamie “a desire to complete my undergraduate degree and to take it even further: go to law school and become an independent woman with a dream to change the world.”



KARLA ARIAS

Dodge City, Kansas

Karla, a first-generation college student, will be a sophomore majoring in biochemistry with a pre-medicine emphasis. Through the Emerging Scholar’s program, Karla is getting her feet wet with experiences directly related to her life dream to join Doctors Without Borders as a pediatric surgeon. Karla referred to the honor of getting to know Mrs. Watkins through the experiences of a Miller Scholarship Hall resident. Comparing their lives, she wrote: “Elizabeth gave up on her education to provide for her family and I decided to pursue an education to help provide for mine.”



LINDSEY RED ELK

Cache, Oklahoma

Lindsey, a first-generation college student, will transfer to KU as a junior majoring in engineering physics. Lindsay wrote in her application, “one must active-



ly seek out opportunities and when they are found, one must pursue them with everything.” Lindsay’s journey to KU started with a volleyball scholarship at Independence Community College. Encouraged by her physics professor, Lindsay pursued an opportunity to attend a Conference for Undergraduate Women in Physics which was held at KU. The conference weekend was a life changing experience. She applied and was admitted to KU. She hopes to use her education to aid the Mars mission or other deep space explorations.

LISA LIM

Dodge City, Kansas

Lisa, a first-generation college student, will be a sophomore majoring in pre-pharmacy. Lisa wrote that “Like Mrs. Watkins, I prioritize my family over everything else”. For several years during high school, she worked nearly full-time at her family’s desserts shop that was their primary income source. Lisa has known for a long time she wanted to work in the healthcare field. After shadowing several pharmacists, she realized that “I wanted to be like them. I wanted to give back to my community . . . with the skills and knowledge of a pharmacist meant to better the lives of other people.”



MATIE MEEKS

Atchison, Kansas

Matie has been admitted to the School of Pharmacy and will be a third-year student in the 6-year PharmD program. Through the experience of visiting her sick father in the hospital over several years, Matie “determined that the real heroes in life were those who dedicated their lives to helping others, like the doctors, nurses, and pharmacists of the hospital – and Mrs. Watkins.” Her work experience at an independent community pharmacy and leadership in KU’s Pre-Pharmacy Club have reinforced her desire to develop a career helping people through the power of medicine. She wrote “I will always hold the selfless values of Mrs. Elizabeth Miller Watkins close to my heart.”



POOJA POLADIA

Olathe, Kansas

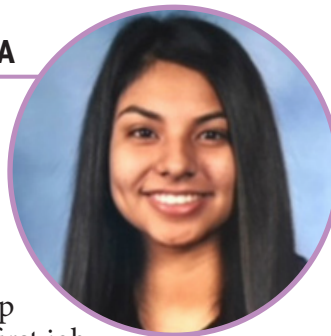
Pooja will be in the fourth year of the six-year pharmacy program leading to a Doctor of Pharmacy. Pooja volunteers at Lawrence Memorial Hospital, serves in leadership positions at Watkins Hall and works as a Pharmacy Intern. Pooja shared that she was inspired by Mrs. Watkins' example of overcoming her struggles. She wrote, "When I came to the US, I realized I had to work a lot harder for I had trouble with the language and the material taught here was vastly different from India. Even then, I loved going to school every day and it mattered to me that I understood material in class."



VANESSA TIRADO-GARCIA

Kansas City, Kansas

Vanessa, a first-generation college student, will be a freshman with the dream of becoming a nurse. Like Mrs. Watkins, Vanessa went to work at an early age to help provide for her family. Her first job was within walking distance from KU medical center. She wrote that "Most of the customers I attended at my job happened to be nursing students and it just made me dream of how one day, maybe that could be me." Vanessa is active in cross country and was team captain for three years. She volunteers in her elementary school and in community summer programs to help children in her neighborhood.



2018-2019 AWARD RENEWAL RECIPIENTS

ASHLEY FARROW

Cave Creek, Arizona

2ND-YEAR RECIPIENT: Ashley will be a senior in her fourth year of a five year program leading to a Master of Architecture. Ashley shared, "I could not be more in love with my major." Her academic plans include fulfilling her study abroad requirement, earning an internship at an architecture firm, and completing courses to achieve a certificate in sustainability. Her Design Build Studio class will design and build a pop-up shop in a renovated shipping container as a test

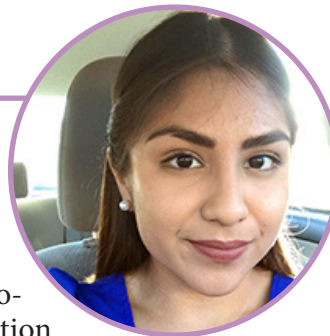


site for start up businesses in Kansas City, Kansas. She writes, "My education will help me reach my goal to create sustainable buildings that will help our planet."

BRENDA SARMIENTO

Kansas City, Kansas

2ND-YEAR RECIPIENT: Brenda will be a sophomore continuing on a pre-nursing track and she plans to complete a minor in Anthropology. She is a first-generation college student. At her job as a Certified Nurse Assistant, Brenda likes making others feel better and the job helps her gain experience related to her chosen career path. Brenda shared, "KU is everything I have imagined and more, I love attending this school." "I value my education so much because it helps me connect with the people I see every day, at my job and around the world on the internet."



CECILIA VILLANUEVA

Hutchinson, Kansas

4TH-YEAR RECIPIENT: Cecilia, a first-generation college student, will graduate with a BS in Microbiology in May 2018. She wrote, "This year is an exciting year full of changes and opportunities." She has been admitted to the KU Medical Center's graduate program leading to a PhD in Microbiology with the goal of becoming an academic biomedical researcher and will be moving out of Miller Scholarship Hall where she has been heavily involved in the running of this home. Congratulations on her engagement to her best friend! Cecilia shared, "I feel so blessed and fortunate to have had the support of generous individuals like yourselves which have allowed me to achieve my dream."



CHEYENNE BROWN

Kansas City, Kansas

4TH-YEAR RECIPIENT: Cheyenne will be a senior next year completing a Bachelor of Science in Biology. Her experience this year as scholarship chair for the service sorority, Omega Phi Alpha, confirmed her desire to help others using whatever resources are available to her. She began working as a



technician assistant at an animal hospital which is preparing her for her future career as a veterinarian. She shared in her renewal application, "It is almost surreal to think that I've come this far, and I just want to say thank you so much for supporting me all this way."

DANIELLE GERETY

Wichita, Kansas

3RD-YEAR RECIPIENT: Danielle will be a senior in her second year at KU Medical Center working towards a Bachelor of Science in Clinical Laboratory Sciences. While working in undergraduate research and shadowing physicians, she realized she wanted a career that was hands-on in the lab. In her renewal application she shared, "I love being in this program, and this scholarship will help me in fulfilling my goal of becoming a medical scientist." After living in a scholarship hall and then with her aunt to save money, she is attempting to live on her own and become more independent.



DESTINY SHELTON

Stafford, Kansas

4TH-YEAR RECIPIENT: Destiny, a first-generation college student, graduated from KU in May 2017 with a BGS in Psychology and a minor in Business. She entered the Social Welfare Graduate Program at The University of Kansas Medical School in Fall 2017. Along with juggling graduate school work, internship and employment, Destiny got married on December 5th.



EDAN BELIHU

Shawnee, Kansas

4TH-YEAR RECIPIENT: Edan, a first-generation college student, will be a sophomore majoring in social work/pre-med with a minor in linguistics. Edan shared "After spending a semester at KU, I have discovered that I love social work and being able to help individuals in a difficult situation." Edan looks forward to being involved in research topics relevant to her career goals and academic interests through the Emerging Scholars program. She also hopes to do some shadowing experiences to better prepare her for medical school.

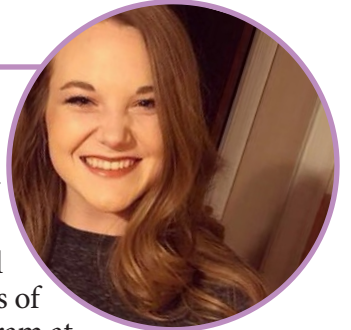


JULIE HIEGER

Andale, Kansas

3RD-YEAR RECIPIENT:

Julie graduated from KU in May 2017 with a Bachelor of Science in Applied Behavioral Science, and in the Fall 2017, she entered the Masters of Occupational Therapy program at The University of Kansas Medical School. Julie shared in her renewal application, "The first two semesters of OT school and the experiences provided have been invaluable. Through classroom coursework and fieldwork opportunities at a day program for adults with different abilities, an assisted living facility, and a free clinic, my decision to pursue OT has been affirmed many times over. . . Despite the financial struggles, I am loving life!"



KATY WINKEL

Flen Elder, Kansas

3RD-YEAR RECIPIENT: Next year Katy will be in her sixth year in the six-year PharmD program and begins clinical rotations in June 2018. She will continue to work as a pharmacy intern and to volunteer at a clinic in Kansas City. Katy started working at a retail pharmacy near her hometown at the age of fourteen. The owner and pharmacist encouraged her pursuit of this career path and inspired her dream to attend the KU School of Pharmacy.



MADISON REED

Edgerton, Kansas

2ND-YEAR RECIPIENT: Madison will complete her final year of undergraduate study next year. In May 2019, she will be a member of the first class of RN/BSN degree partnership students to graduate from Johnson County Community College. She will graduate with an Associate of Applied Science in Nursing from JCCC and a Bachelor of Science in Nursing from KU. Madison wrote in her renewal application, "I am beyond excited to finally walk under the campanile and down the hill as a graduating student and cannot thank enough everyone affiliated with Elizabeth Miller Watkins for believing in me and helping me accomplish my goal of becoming a nurse!"



MARISSA MORENO

Kansas City, Kansas

2ND-YEAR RECIPIENT: Marissa, a first generation college student, will be a sophomore studying Civil Engineering. Marissa shared, "I feel that I am thriving. My classes truly interest me and I am doing really well in them. The people, especially the girls, in my major have really made an impact on me because they have truly believed in my ability to succeed. I would love to continue receiving this scholarship because it is so amazing to just be able to focus on school like everyone else. I just wanted to say thank you for all of your support."



MELISSA O'NEAL

Lawrence, Kansas

2ND-YEAR RECIPIENT: Melissa, a first-generation college student, will graduate in May 2018 with a BS in Community Health Education. She has been accepted into the Master of Occupational Therapy program at KU Med Center. She shared in her renewal application, "My husband and I are both pursuing higher education to create a better future for our son. The financial burden on our shoulders is huge and receiving a renewed scholarship would be such a blessing. Receiving this scholarship would allow me to work slightly less and spend more time with our son and working on the requirements for my master's degree."



NHI BUI

Olathe, Kansas

2ND-YEAR RECIPIENT: Nhi, a first-generation college student, will be in her fifth year of the six-year Doctor of Pharmacy program. She wrote, "I have been very grateful and humbled for the financial assistance that has alleviated some of my financial burden. Sometimes I find it difficult to focus on things outside of academics, because of how physically demanding my curriculum is, however I'm continuing to make improvements in this area. I am looking forward to spending time with my grandmother who is coming



to the States to visit my family from Vietnam. My grandmother played a big part of my life as a child."

NOOSHIN SHAHLARI

Leawood, Kansas

2ND-YEAR RECIPIENT: Nooshin will complete her coursework for a BS in Chemical Engineering in May 2019. She founded, and is President of, an organization, Women in Medicine. She shared, "Although this organization a passion of mine, it takes a lot of time and resources. I love the impact it makes, however it leaves me minimal time to work or to have an income. I want to make a difference in the lives of women and students that I reach. I am very fortunate for the Watkins Scholarship, to allow me to devote my time to making an impact through the organization I have started."



RAJVI SHAH

Overland Park, Kansas

4TH-YEAR RECIPIENT: Rajvi graduated from KU in May, 2017, with a Bachelor of Science in Neurobiology. She was accepted to the University of Kansas, School of Medicine, and will begin her second year in medical school in the Fall as she works towards a career in pediatric neurology as a Doctor of Medicine. She shared in her renewal application, "I am thankful for this scholarship and the women I have met through this organization!"



SOPHIA SANCHEZ

Derby, Kansas

2ND-YEAR RECIPIENT: Sophia, a first-generation college student, will be a senior working towards a Bachelor of Art in Psychology. Last spring, she volunteered at a hospice center and over the summer she shadowed doctors in hospitals in Spain. She shared that both were amazing experiences and she gained a lot of knowledge from both of them. She now plans to apply for graduate study program to become a clinical psychologist. In her last year at KU, Sophia will focus on preparing for graduate school by getting more involved as a research lab assistant.



sisters

WE HAVE LOST

We would like to extend K8 heartfelt sympathy to all of these families who have lost a loved one. Sadly, we don't always know when a sister passes away, but we always care.

EILEEN (GRIFFITHS) BENNETT

Watkins 1940-44

Eileen (Griffiths) Bennett (Watkins, 40-44) passed away February 14, 2018 at the age of 94. Eileen graduated Summa Cum Laude from Ozawie High School in 1940 and went on to earn a Bachelor's Degree in Bacteriology from the University of Kansas in 1944. She moved to California in 1945 to work at Scripps Institute in La Jolla. In 2003, she moved to Colorado to be near her son, Phil, and his family; she enjoyed fifteen years with an

abundance of loving friends from the community and Heritage United Methodist Church.

Eileen was a great supporter of Kitchen 8 and a personal friend of Norma Hoagland, who visited her in Littleton several times. Norma remembers, "Once I arrived for a visit and Eileen had set the table for lunch with her best china and silver, roses in the center, and remarked 'Mrs. Watkins would approve, I think!' with such a twinkle in her eye! She and I bonded over growing up on isolated farms in small Kansas towns not far apart, and the experiences we had as youngsters. Although nearly 30 years separated us, we really became Watkins Sisters and I miss her."

Eileen is survived by Ray Pearson, her loyal companion of nearly thirty years; her sister Audrey; her four children: Joanne, Pamela, Lynn, and Phil; nine grandchildren: Donnelle, Yvette, Eric, Amelia, Lisa, Francesca, Brittany, Stewart, and Joshua; and seven great-grandchildren.

OBITUARY: <https://ellisfamilyservices.com/obituaries/obituary-listings?obId=2966203#/obituaryInfo>; <https://www.legacy.com/obituaries/name/eileen-bennett-obituary?pid=188199081>

NADINE (SCHUERMAN) KUNZ

Watkins 1938-42

Nadine (Schuerman) Kunz (Watkins, 38-42) passed away on March 31, 2018 at the age of 97. Nadine graduated from the University of Kansas, where she lived in Watkins Scholarship Hall and received membership in Pi Lambda Theta and Phi Beta Kappa. All three of her children attended the University of Kansas, as well.

During WWII, Nadine worked for the U.S. Censorship Bureau interpreting business mail from Central and South America. After WWII, she married Robert L. Kunz, a handsome Air Force pilot; they were together for 62 years, until his death in 2008. In addition to raising three children, Nadine was an active volunteer in the Village Presbyterian Church, P.E.O., ICYE, and Children's Mercy Hospital. Nadine was preceded in death by her parents, husband, siblings, and her beloved daughter, Rebecca Lovett. Nadine is survived by her sons, Stephen and William; her son-in-law Don Lovett; nine grandchildren: Eric, Evan, Lara, Michael, Anna, Meghan, Tiffany, and Caprice; nine great-grandchildren; and two great-great-grandchildren. Nadine also leaves nieces and nephews who thought of Aunt Nadine as their second mother.

OBITUARY: <https://legacy.com/obituaries/kansascity/obituary.aspx?n=nadine-schuerman-kunz&pid=188674122&fhid=11338>

CAROLE (RUHLEN) GRAY

Watkins 1945-48

Carole (Ruhlen) Gray (Watkins, 45-48) passed away on August 11, 2017 at the age of 89. Carole graduated the University of Kansas in 1948, and married Glenn C. "Barney" Gray in September 1948.



ABOVE: Eileen (Griffiths) Bennett, Watkins 1940-44.

Carole was a founding member of Asbury Methodist Church in Prairie Village, KS. She and Barney supported the church throughout their lives, and she enjoyed singing in the choir, and participating in her UMW circle. Carole was president of the MSPE Auxiliary, and an officer in the Kansas Historical Society. Carole played trombone, piano, and organ, and was an accomplished seamstress, bridge player, and an excellent cook. She loved spending time with her many friends and family.

Carole is preceded in death by her husband, Glenn C. "Barney" Gray, and her siblings Stafford, Ralph, and Lylas. She is survived by her sister, Ruth; her five children: Jeffrey, Jon, David, Julia, and Laura; eleven grandchildren; and five great-grandchildren.

OBITUARY: <https://www.koupfunerals.com/obituaries/Carole-Gray-4/#!/Obituary>

ELIZABETH "BETTY" (AUSTIN) HENSLEY

Miller 1941-44

Elizabeth "Betty" (Austin) Hensley (Miller, 41-44) passed away on May 11, 2018 at the age of 94. Betty graduated the University of Kansas with a degree in Chemistry and as a member of Phi Beta Kappa. She also met and married Cline D. Hensley, Jr. while at the University of Kansas. Cline served as a physician in the Army of Occupation following WWII. Betty joined him first in Augsburg, then in New York; eventually they settled in Wichita, where she was active in the community and her church. Betty studied the flute as a child, and it became her lifelong passion and work. She maintained a private flute studio, teaching flute until she was 90. Betty's collection of



ABOVE: Marion Wiley's admires the check signed by 'Lizzie J. Miller, Asst. Sec.', at the Watkins Museum of History display on Elizabeth Watkins' philanthropy in 2014.

over 400 ethnic and antique flutes now resides at the University of Kansas. Using her collection, Betty developed a variety of programs demonstrating how the flute was used both musically and culturally throughout the world and over time. She was a touring performer for the Kansas Arts Commission and performed across the United States, Canada, Europe, Africa and Asia. She was a member of the National Flute Association's tour to the Soviet Union and the American Flute Orchestra's tours to Austria, Italy, England and Spain.

Betty was predeceased by her parents and husband. She is survived by her sons, Doug, Bill, and Larry; nine grandchildren, Deanne, Andrew, Rachel, Thomas, William, Jessica, Chad, Daniel, and Christina; as well as eight great-grandchildren.

OBITUARY: <http://www.downingandlahey.com/obituary/4879990>

MARION (WILEY) WILLEY

Friend of Kitchen 8

Marion (Wiley) Willey (Friend of Kitchen 8) passed away October 24, 2017 at the age of 90.

Marion was born in Lawrence, KS and graduated from Liberty Memorial High School. She married Elden E. Willey on Sept. 15, 1946, at First Baptist Church in Lawrence. Marion worked as a secretary at the University of Kansas Department of Anthropology, and later worked at Hallmark Cards for many years. She was a founding member of the Kaw Valley Quilters and Crazy Quilters, and enjoyed spending time with her dogs. Marion was a long-time member of First Presbyterian Church.

Marion and her husband Elden collected stamps. He saved a box of postcards and old cancelled checks (including some signed by "Lizzie J. Miller, Asst. Sec.") from being destroyed at the old City Hall (now the Watkins Museum of History building). Eventually, Marion worked with Kitchen 8 to donate these historic materials to the Watkins Museum.

Marion was preceded in death by her husband in 1996. She is survived by her two sons, Gale and P. Willey.

OBITUARY: <https://rumsey-yost.com/2017/11/marion-willey/>



BETSY (WIGNER) HOLSTE

Friend of Kitchen 8

Betsy (Wigner) Holste (Friend of Kitchen 8) passed away on June 13, 2018 at the age of 65. Betsy's mother Margery was a Watkins woman, and Betsy kept up with the activities of K8, often coming to our annual meetings in memory of her mother.

Betsy was valedictorian of her high school graduating class of 1970. Her college career consisted of 2 years at the University of Kansas and 2 years at Kansas State University; she graduated with a degree in secondary education, with an emphasis in History. In 1974, she married Roger Holste and together they worked side by side raising crops and cattle.

Betsy was a woman of many talents: a wonderful cook and baker, and very artistic and creative. Betsy also had a kind heart for all living things, and looked to rescue stray, rejected, or injured birds and animals of all stripes. Her interests included Home Extension Club, Craft Club, Rawlins County Historical Society, and PEO; she also served on her local Election Board for many years.

She was preceded in death by her parents, and she is survived by her husband, Roger; her brother, Harry; nephews: John, Jonathan, Jeffrey, and Alex; and nieces: Sarah, Jeni-
enne, and Libby; as well as seven grand-nephews and several cousins.

OBITUARY: <http://www.baalmanmortuary.com/book-of-memories/3534404/holste-betsy/obituary.php>

(HOWARD) DOUG GEORGE

Friend of Kitchen 8

(Howard) Doug George (Friend of Kitchen 8) passed away on August 7, 2018 at the age of 95. He graduated Kansas State University in 1949, with a major in Animal Science. From 1943-1946 during World War II, he served in the Army with the 69th Infantry Division in Germany. Doug had a career in farming and ranching, in farm management, and as a sales representative for agricultural companies.

He married Roselyn Skonberg on June 18, 1950, and together they raised three daughters. Doug was dedicated to his family, gathering family history into books for future generations, creating yearbooks for each year featuring the family photos, sports highlights, and national news of that year, and considering his grandchildren's visits the highlights of his life. He gave a dozen roses to Roselyn seven specific times each year and left instructions to the family to continue this

after he is gone.

Doug was a great friend to Kitchen 8. Many of our members remember Doug accompanying Roselyn to our annual meetings, and generously sharing her time with us! He was very supportive of our work and always had a gift for conversation with our members. We share his loss with Roselyn, and several members attended his memorial service in Colorado.

Doug was preceded in death by his parents, his sister Eleanor, brother Jackson, and son-in-law Gary. He leaves behind his wife Roselyn; daughters Susan, Sara, and Laura; his brother Phil; grandchildren Sean, Drew, Reid, Matthew, Erin, Allison, Andrew, Rachel, Rebecca, Susanna, and Elizabeth; as well as eight great-grandchildren; and numerous nephews, nieces, cousins, and friends.

OBITUARY: <https://www.dignitymemorial.com/obituaries/colorado-springs-co/douglas-george-7956159>

BY MICHELLE LOEWENSTEIN

Kitchen 8 Editorial Board



ABOVE: Doug George and Roselyn (Skonberg) George, on a Lawrence visit to Gayle Matchett in 2014.

TREASURER'S REPORT

DONATE TO KITCHEN 8... *leave your own legacy*

On behalf of Kitchen 8, Inc. I wish to extend a heartfelt thanks to the supporters of Watkins and Miller Scholarship Hall alumni organization. Many of our supporters contributed their gift of time and expertise, others sent financial support and some contributed both.

Kitchen 8, Inc. is an all-volunteer alumni organization whose sole mission is to continue with "Lizzie's Legacy" by enhancing the lives of young women who must "walk uphill" for their education. Our mission is accomplished in two ways:

- Elizabeth Miller Watkins Memorial Scholarship (EMWMS) fund is governed by Kitchen 8, Inc. and the designated Scholarship Advisory Committee. The fund is invested with Greater Kansas City Community Foundation (GKCCF). The committee screens and approves applicants for scholastic achievement, demonstrated financial need, first member in family to attend college and more. The scholarship is not exclusive to Watkins or Miller Scholarship Halls and available to other women attending the University of Kansas (KU).
- The Sugar Bowl Fund is for ex-

clusive benefit of young women living in Watkins and Miller Scholarship Halls. Kitchen 8, Inc. members mentor the young women and schedule events such as professional speakers for Career Day, Welcome Dinner for the incoming new women, complimentary seating at the Annual Scholarship Award and Brunch. During all events, 'Lady Bountiful' is acknowledged so her legacy passes to each new generation of women.

INCOME

On January 1, 2018, Kitchen 8, Inc. and the Sugar Bowl Fund embarked on its second year as a Not-for-Profit Corporation. With a generous 2017 donation received from Committee for the Preservation of Watkins and Miller Scholarship Halls, our 2018 Sugar Bowl fund had a beginning bank balance of \$9,098.93. We received contributions totaling \$9,248.24 resulting in working capital of \$16,457.17 for the year ending 2018.

EXPENSES

Donations made to Kitchen 8, Inc., earmarked for EMWMS fund, were paid to GKCCF where the funds are invested. After reconciling financial obligations to our scholarship fund and paying all expenses associated with Watkins and Miller Scholarship Hall events, mailings and other standard operating expenses, the year will end with a balance of \$5,418.70.

During the past year, the Sugar Bowl provided funding for the following events:

- January, 2018: Elizabeth Miller

Watkins birthday celebration. In "Lizzie's" spirit of giving, Kitchen 8, Inc. gifted the ladies of Lilac Lane items recorded on their wish list.

- April, 2018: Annual Kitchen 8, Inc. Board of Directors Meeting & the Annual Scholarship Award Ceremony:
 - Kitchen 8, Inc. Board of Directors meeting was held April 27, 2018.
 - April 28, 2018, Kitchen 8, Inc. held the Annual Scholarship Award Ceremony and announced the recipients of the 2018 scholarship awards and renewals to 12 new recipients and 14 renewals.
 - April 29, 2018: High Tea on Sunday afternoon at both Watkins and Miller Scholarship Halls. K8 awarded the book "Watkins & Miller Halls" to all seniors who lived in Watkins or Miller Hall all four years.
- September, 2018: New Women's Dinner welcoming the incoming new residents was hosted by Kitchen 8, Inc. members who prepared and served their treasured scholarship hall recipes.

The EMWMS fund began 2018 with \$1,432,468.90 and received \$4090.00 in donations during the year. The fund distributed \$75,000 in scholarship awards and had \$8,582.43 in fees. Current scholarship fund balance is \$1,381,603.96.

Our organization is made up of women who lived either in Watkins or Miller Scholarship Halls. No one is paid a salary; all funds are

*You can
celebrate a special
person, anniversary,
birthday, or retirement
with a donation to
Kitchen 8; give in honor
of a former roommate; or
ultimately in memory
of a dear one you
have lost.*

used to benefit the young women "who walk uphill"..... as we once walked.

Your donations are our only source of income. EMWMS fund and the Sugar Bowl are the two arms of Kitchen 8, Inc. reaching out to enrich the lives of the women living in the halls and campus.

Both funds are Not-for-Profit 501 C (3) Corporations. Your entire financial gift is tax deductible to the extent allowed by law. For your convenience, a donation form is provided.

BY ELENA WAHBEH

Kitchen 8 Treasurer 2018

DONATION FORM

Name: _____

Street Address: _____

City, State and Zip Code: _____

Scholarship Hall of residence/years: _____

In Honor of/Memory of: _____

I wish to support:

_____ Kitchen 8 Sugar Bowl Fund

_____ Elizabeth Miller Watkins Memorial Scholarship Fund

MAIL DONATION TO:

Treasurer, Kitchen 8, Inc.

PO Box 1543

Lawrence, KS 66044

ONLINE DONATION:

We also accept PayPal donations at
www.kitchen8.org/donate.

Thank you!

2018 DONORS: EMW Memorial Scholarship Fund & Kitchen 8 Sugar Bowl Fund

FROM THE 1930'S

Janice Gartrell Charitable Remainder Trust

FROM THE 1940'S

Doris Brown, *in memory of Carolyn Crocker, Watkins 1944-46*
Donna (Holm) Fisher, *Watkins 1946-49*
Roselyn (Skonberg) George, *Watkins 1945-48, in memory of Betsy Holste*
Mary (Carter) Gosney-Lancaster, *Miller 1947-48*

FROM THE 1950'S

Bev (Runkle) Benso, *Watkins 1954-58*
Ann (Fahrback) Branden, *Watkins 1956-59, in memory of her sister, Phyllis*
Anne (Peterson) Cash, *Watkins 1959-60*
John David Armstrong, *in honor of Lois Margaret French, RN, USN, Miller 1956-57*
Barbara (Emison) Gaffield, *Watkins 1956-58, in memory of Mother Willard*
Gayle (Barry) Matchett, *Watkins 1955-57, in memory of Eileen Griffiths Bennett, Betsy Holste, Marion Willey*
Pat (Powers) McClure, *Watkins 1952-55, in memory of Jim McClure; in memory of Mary (Betz) Duroche, W*

50-54

Sarah (Selbe) McKinley, *Watkins 1951-54*

Judy (Johnson) Niebaum, *Miller 1958-61*

Carol (Hemphill) Starr, *Miller 1952-55*

FROM THE 1960'S

Doris (Soden) Butler, MD, *Watkins 1966-70*
Norma (Decker) Hoagland, *Watkins 1969-71, in memory of Eileen Griffiths Bennett, W 40-44; in memory of Doug George, in memory of Joan Asperheim*
Gary and Helen (Berge) Richards, *in honor of Miller Hall*
Valerie (Vandenberg) Roper, *Watkins 1962-64*

FROM THE 1970'S

Elizabeth (Ervin) Boman, *Watkins 1971-75*
Margaret Heisel, *Watkins Resident Director 1971-74*
Susan (Harshaw) Kissinger, *Watkins 1970-74*
Cathie (Fuller) Miller, *Watkins 1970-73*
Camille (Icenogle) Olcese, *Watkins 1971-74*
Sarah (Wohlrabe) Shortall, *Watkins*

1972-76

Janice Stevens, *Miller 1974-79*

FROM THE 1980'S

Mary Boyce, MD, *Watkins 1983-87*

FROM THE 1990'S

Alica Thomas (Miller 1990-94)

FROM THE 2000'S

Stevi Ballard, *Watkins 2006-10*
Emily Bannwarth, *Rieger/Miller 2004-08*
Christina Clough, *EMWMS Recipient*
Mary (Emerson) Gomez, *Watkins 2004-08*
Emily Hane, *Watkins 2008-10*
Valentine (Baumann) O'Kane, *Watkins 2003-05*
Abby Olcese, *Watkins 2008-09*
Aimee (Richardson) Walkiewicz, *Miller 2002-05*
Paula (Hopkins) Wrigley, *Miller 2003-08*

FRIENDS OF KITCHEN 8

Betty Alderson
Michael Shaw, *in honor of Kitchen 8's work*

Thank you
for your efforts to
support the mission
of Kitchen 8 & the EMW
Memorial Scholarship
as together we
promote the legacy of
Elizabeth Miller
Watkins.

KITCHEN8

*Alumnae Association for Watkins
and Miller Scholarship Halls & our
EMW Memorial Scholarship Recipients*

**PO BOX 1543
Lawrence, Kansas 66044**

WWW.KITCHEN8.ORG

KITCHEN 8 PRESENTS:

2019 Schedule of Events

SATURDAY, APRIL 27, 2019

- 9:00 AM–1:30 PM** *Meet and Greet, K8 Annual Business Meeting, Elections, Program, Brunch & Scholarship Awards*
Maceli's, 1031 New Hampshire
- 2:00 PM** *Join our Guided Tour of the Watkins Museum of History, 1047 Massachusetts*
- 3:00 PM** *K-8 Board Meeting at Watkins Museum of History's Community Room, 1047 Massachusetts*
- 5:00 PM** *Reception for Outgoing Board Members at Watkins Museum of History's Community Room*
- 7:00 PM** *Dutch Treat Drinks & Dinner*
Cielto Lindo, 815 New Hampshire

SUNDAY, APRIL 28, 2019

- 2:00 PM** *Alumnae Teas at Watkins Hall and Miller Hall*
- 4:30 PM** *Traditional Laying of Flowers at Elizabeth's Grave, Oak Hill Cemetery*

Elizabeth Miller Watkins



HER LOVING LEGACY CONTINUES, IN YOU

We take great pride in having lived in Watkins and Miller Halls and being a member now of Kitchen 8. Our gratitude for Elizabeth's gift given to us can be returned in many ways. Our inspiration is that one woman could make such an immense difference with intelligent generosity and faith in education and young women.